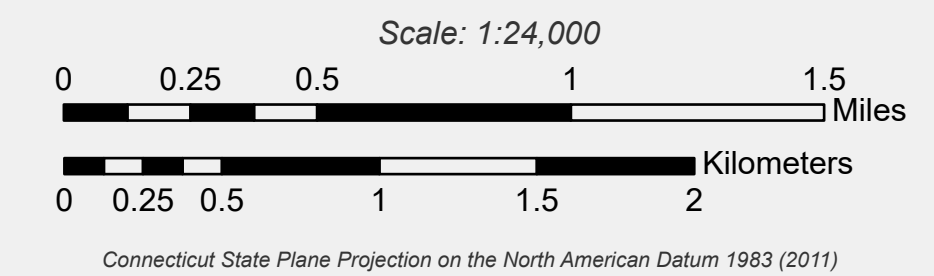
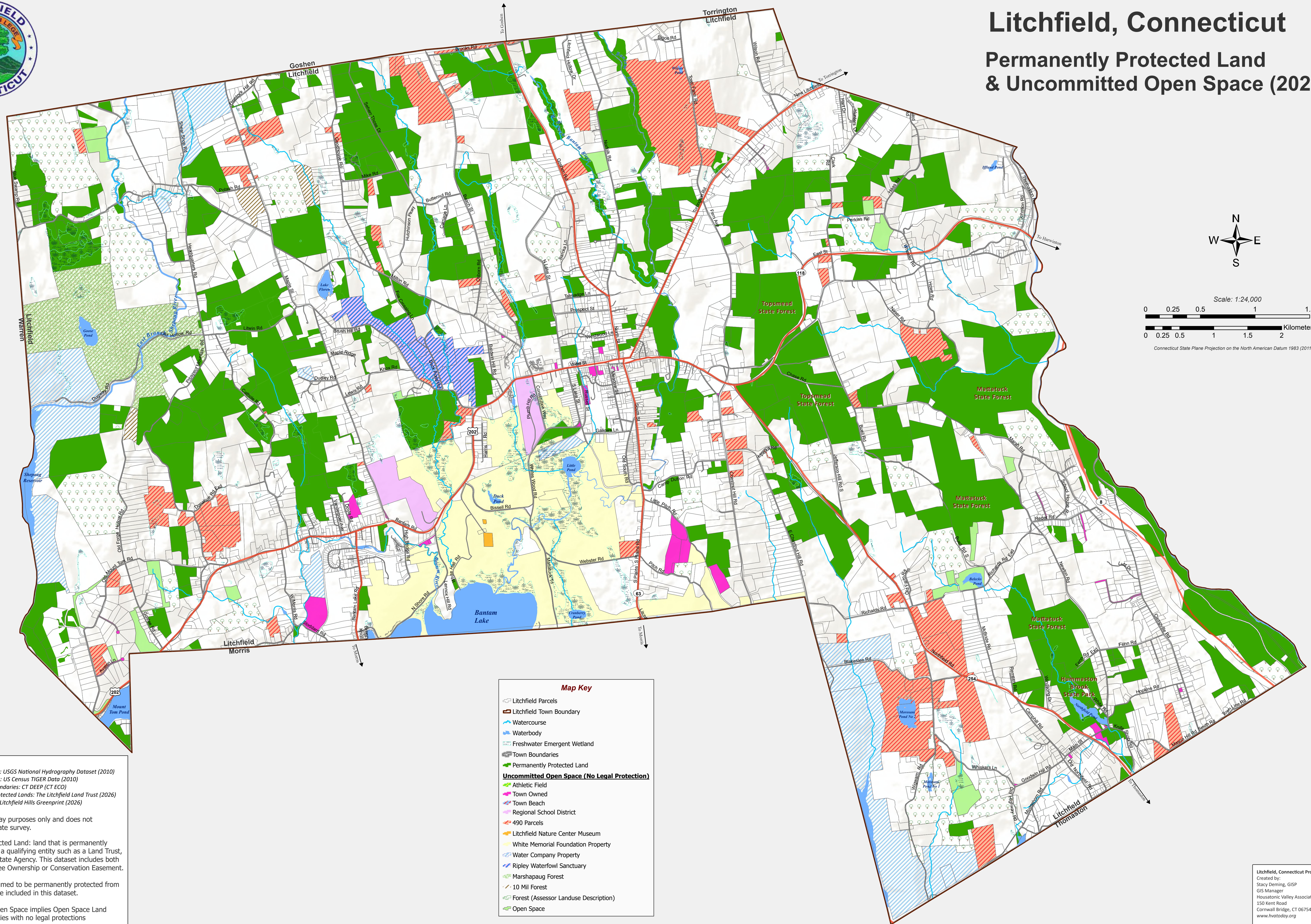




# Litchfield, Connecticut

## Permanently Protected Land & Uncommitted Open Space (2026)



**Map Key**

- Litchfield Parcels
- Litchfield Town Boundary
- Watercourse
- Waterbody
- Freshwater Emergent Wetland
- Town Boundaries
- Permanently Protected Land
- Uncommitted Open Space (No Legal Protection)**
- Athletic Field
- Town Owned
- Town Beach
- Regional School District
- 490 Parcels
- Litchfield Nature Center Museum
- White Memorial Foundation Property
- Water Company Property
- Ripley Waterfowl Sanctuary
- Marshapaug Forest
- 10 Mil Forest
- Forest (Assessor Landuse Description)
- Open Space

**Data Sources:**  
 Streams, Rivers & Lakes: USGS National Hydrography Dataset (2010)  
 Streets, Roads & Routes: US Census TIGER Data (2010)  
 Contours and Town Boundaries: CT DEEP (CT ECO)  
 Litchfield Land Trust Protected Lands: The Litchfield Land Trust (2026)  
 Other Protected Lands: Litchfield Hills Greenprint (2026)

This map is for display purposes only and does not represent an accurate survey.

\*Permanently Protected Land: land that is permanently legally protected by a qualifying entity such as a Land Trust, Federal Agency or State Agency. This dataset includes both land protected by Fee Ownership or Conservation Easement.

Cemeteries are assumed to be permanently protected from development and are included in this dataset.

\*\* Uncommitted Open Space implies Open Space Land or Municipal Properties with no legal protections

Date Exported: 2/19/2026

Litchfield, Connecticut Protected Lands Map  
 Created by:  
 Stacy Deming, GISP  
 GIS Manager  
 Housatonic Valley Association  
 150 Kent Road  
 Cornwall Bridge, CT 06754  
 www.hvatoday.org