

TOWN OF LITCHFIELD

NEWSLETTER

EMERGENCY NOTIFICATIONS



Get alerted about emergencies and other important community news by signing up for the Litchfield Emergency Notification System. This emergency notification system enables the Town of Litchfield to provide our citizens with critical information quickly in a variety of situations, such as severe weather, unexpected road closures, missing persons, and evacuation of buildings or neighborhoods.

SIGN UP [HERE](#)

July 2025



CITIZEN AWARD

DO YOU KNOW SOMEONE WHO GOES ABOVE AND BEYOND FOR THE LITCHFIELD COMMUNITY? EACH MONTH, WE INVITE READERS TO NOMINATE OUTSTANDING INDIVIDUALS WHO MAKE A DIFFERENCE IN OUR TOWN. THOSE NOMINATED WILL BE HONORED AT A BOARD OF SELECTMEN MEETING, WHERE THEY WILL RECEIVE A PROCLAMATION FROM THE FIRST SELECTWOMAN IN RECOGNITION OF THEIR CONTRIBUTIONS. ADDITIONALLY, A WRITE-UP WILL BE IN THE FOLLOWING MONTH'S NEWSLETTER.

TO NOMINATE SOMEONE, SIMPLY CLICK ON THE LINK BELOW:

[LITCHFIELD CITIZEN AWARDS](#)

LET'S CELEBRATE THE INCREDIBLE PEOPLE WHO MAKE
LITCHFIELD A BETTER PLACE TO LIVE!

UPCOMING MEETINGS

CLICK [HERE](#) FOR MORE SCHEDULED MEETINGS

- July 17, 7pm, Historic District Commission, Pilgrim House
- July 17, 7pm, Milton Historic District Special Meeting, Trinity Church
- July 17, 7pm, Town Facilities Review, Annex
- July 21, 7pm, Planning & Zoning, Annex
- July 22, 4pm, Housing Authority, Wells Run Community Room
- July 24, 4pm, Social Services Board, Annex
- July 24, 7pm, Region 20 BOE, Lakeview High School Auditorium
- July 30, 7pm, Economic Development Committee, Annex
- July 31, 7pm, LCD BOD, Torrington Firehouse

BANTAM BUSINESSES OPEN!

DETOUR TO LOCAL: YOUR FAVORITE SHOPS ARE STILL OPEN!

DON'T LET THE ROUTE 202 BRIDGE WORK DETOUR YOUR PLANS – BANTAM'S LOCAL SHOPS, RESTAURANTS, AND BUSINESSES ARE OPEN AND READY TO WELCOME YOU! SUPPORT YOUR FAVORITES AND SHOP LOCAL TODAY!



UPCOMING PARK & REC PROGRAMS

PADDLEBOARD 101

WITH
THERESA SHEREMETA OF SOULFUL SUP AND YOGA
500 HR. REGISTERED YOGA TEACHER AND CERTIFIED LIFEGUARD



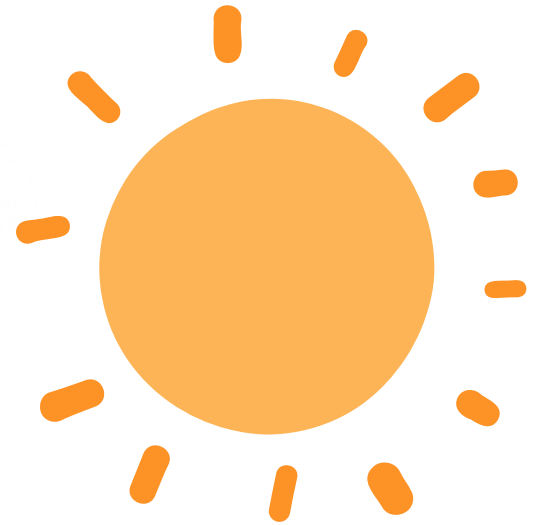
Litchfield Town Beach
AUGUST 2nd & 3rd
9-10:30am

VISIT
LITCHFIELDParkAndRec.com
FOR MORE INFO

\$150 Our Gear
\$125 Your Gear
LIMITED AVAILABILITY

 LITCHFIELD
PARK & RECREATION





FLIPPENOUT TRAMPOLINE SHOW

Thursday, August 14
Community Field
Trampoline Show
starts at 6pm

Food Trucks, Ice Cream Truck

  LITCHFIELD PARK & RECREATION

 John Scheepers
BEAUTY FROM BULBS
23 Tulip Drive • P.O. Box 638
Bantam, CT 06750

 THE
LITCHFIELD
INN



SUMMER CONCERT SERIES



★SUMMER ★CONCERTS★ 2025

WEDNESDAY NIGHTS ON THE GREEN	get together with family and friends, grab dinner at a local establishment and enjoy the music on the green
june 18-aug 6	
6:00-8:00pm	

12 05693 3053 4

6/25	Potters Field
7/2	Tradesmen
7/9	The Survivors Swing Band
7/16	Center Line
7/23	Wires and Woods
7/30	CT National Guard ARMY 102nd Band
8/6	Mikey, Matt & Co
8/13	Wooden Horse Band

Sponsored by the generosity of

7 West Street Litchfield, CT 06759 860.567.5084

LAWRENCE JEFFREY



SOCIAL SERVICES BACK TO SCHOOL SUPPLIES

BACK TO SCHOOL

LITCHFIELD SOCIAL SERVICES

Prepare your child to go BACK TO SCHOOL
Sign up for backpacks, school supplies and clothes.

**MUST SIGN UP
BY 7/21/25**

WHO IS ELIGIBLE?

- ✓ Litchfield, E. Litchfield, Milton, Northfield & Bantam residents
- ✓ Grades K-5

**CALL, EMAIL OR VISIT THE
BANTAM ANNEX FOR INFO**

(860) 567-7564

SOCIALSERVICES@TOWNOFLITCHFIELD.ORG



CT NATIONAL GUARD 102ND ARMY BAND PERFORMANCE

CONCERT ON THE GREEN CT NATIONAL GUARD 102ND ARMY BAND

JULY 30



Bus rides available. Pick up at 5:15 and return home
around 8pm

To reserve your spot call Litchfield Social Services
(860)567-7564

STATE POLICE SCHOOL SUPPLY DRIVE

CT State Police Troop L is hosting a school supply drive to help send local kids back to school with the "write" supplies!

SCHOOL

DONATIONS CAN BE BROUGHT TO:

Troop L

452 Bantam Rd A,
Litchfield, CT 06759

For Questions, contact:

Trooper Vicki Donohoe
vicki.donohoe@ct.gov
860.927.3134



SUPPLIES NEEDED:

Backpacks
Lunchboxes
Colored Paper
Pens & Pencils
Crayons & Markers
Colored Pencils
Glue & Tape
Folders & Binders
Scissors & Calculators
Reusable Water Bottles

AND MORE!

SUPPLY DRIVE

Supplies can be donated **7/1- 8/4**

RENTERS' REBATE PROGRAM

LITCHFIELD SOCIAL SERVICES

Renter's Rebate Program

1099 FORM FOR SOCIAL
SECURITY/DISABILITY
(SR1099).

EVIDENCE OF PAYMENTS
FOR RENT, UTILITY
(ELECTRIC, GAS, WATER &
FUEL.

RENT RECEIPT OR CANCELLED
RENT CHECKS FOR ENTIRE
2024 YEAR OR LETTER FROM
LANDLORD.

BANK INTEREST
STATEMENT AND
DIVIDENDS(2024 1099S).

PENSION, RETIREMENT
STATEMENT FOR 2024
(1099S).

COPY OF 2024 FEDERAL
INCOME TAX RETURN
(1040), IF FILED MUST BE
PRESENT.

Renters, make an appointment to apply for the program in July:
call (860) 567-7564

RENTERS' REBATE PROGRAM CONT.

LITCHFIELD SOCIAL SERVICES

Renter's Rebate Program

- GUIDELINES FOR STATE OF CT RENTERS REBATE PROGRAM
- CLAIMANT MUST HAVE RESIDED IN CT FOR ANY ONE-YEAR PERIOD PRIOR TO FILING AN APPLICATION
- CLAIMANT (OR SPOUSE IF LIVING TOGETHER) MUST HAVE BEEN 65 YRS OF AGE BY DECEMBER 31, 2024, OR BE 50 YRS OF AGE OR OLDER AND THE SURVIVING SPOUSE OF A RENTER WHO AT THE TIME OF THEIR DEATH QUALIFIED AND WAS ENTITLED TO TAX RELIEF
- PERSONS 18+ YRS OLD WHO ARE RECEIVING SOCIAL SECURITY OR DISABILITY BENEFITS
- QUALIFYING INCOME MAXIMUMS: SINGLE \$45,200, MARRIED \$55,100
- ALL DOCUMENTS MUST BE PRESENTED AT THE TIME OF YOUR APPOINTMENT. PLEASE MAKE COPIES OF ALL YOUR DOCUMENT, DOCUMENTS WILL NOT BE RETURNED

Renters, make an appointment to apply for the program in July:
call (860) 567-7564

LVA EMT CLASSES

The Litchfield Ambulance Association is offering a State of CT Office of Emergency Medical Services certified Emergency Medical Technician (EMT) course. The course provides training and associated clinical experience dealing with medical and trauma-related emergencies and prepares the student for employment and/or volunteer service as an EMT. Students must be 16 years of age by the date of graduation. Parental authorization must be granted for all students under the age of 18.

Beginning on 09/02/25, the course will be held Tuesday and Thursday evenings beginning at 6:00 P.M. The anticipated conclusion date is 12/11/25. There are no weekend classes. The course is conducted at the Litchfield Ambulance Training Facility located at 35 Plumb Hill Rd. in Litchfield.

A laptop/tablet and internet access are required. This program combines classroom and on-line learning which eliminates the need for class cancellation due to inclement weather. Students will have access to a video library which contains all classroom lectures, practical exercises, exams, and quizzes. Examinations are computer based in order to prepare the student for the State of CT written exam. Attendance is mandatory, not optional. The video component serves as a supplement in the event of illness, inclement weather, or instructor approved personal matters.

Financial hardship payment plans are addressed on an individual basis.

INDIVIDUALS INTERESTED IN BECOMING MEMBERS OF THE LITCHFIELD AMBULANCE ASSOCIATION:

Financial exemptions/arrangements are available to those individuals who successfully complete the course, obtain their State of CT certification, and fulfill the Association's requirements.

Click on the below link for specific information such as course requirements and fees, and/or to register for the class:

<https://forms.gle/QBkQSv7NZVvpGeQDA>

Openings are filled on a first come basis. Class size is limited in order to provide a safe environment with an optimal instructor-student ratio.

Additional information can be obtained by e-mailing litchfieldambulance@gmail.com or by calling 860-567-0127.

If registering for the course, please provide all of the requested information. This information is for course use only and will not be disseminated to a third party.

LITCHFIELD COMMUNITY EMERGENCY RESPONSE TEAM



The Litchfield Community Emergency Response Team (CERT) will have a “CERT Visibility Week” from August 9, through August 15. The Litchfield CERT assists the Town in times of disaster and emergency by doing such things as operating distribution points for needed supplies and commodities, staffing shelters, warning and cooling centers, assisting at the Town’s emergency operations center, helping vulnerable residents, and other activities as may be necessary. CERT members operate at all times under the direction of Town officials or first responders. CERT is a national program, and in Connecticut, approximately half the municipalities in the State have CERT Teams.

During CERT Visibility Week, you may see CERT members wearing CERT apparel, driving vehicles with “Community Emergency Response Team” signs on them, and staffing information booths at flea markets and other locations in town. There will also be information about CERT on the Town website.

The Litchfield CERT provided a great amount of assistance during the COVID-19 pandemic and during Tropical Storm Isaias. Though not called upon frequently, the CERT provides the town with a valuable resource when needed.

During CERT Visibility Week, if you would like to join the Litchfield CERT, you can sign up to take the CERT Basic Training Class at Town Hall or the Town Hall Annex. It is a 20-hour class on basic self-preparedness that all CERT members are required to take. If at least 10 people sign up for the training, we can hold a CERT Basic Training class here in town.

CERT members may also be offered the opportunity to take specialized training in such things as shelter management, active shooter awareness, Stop the Bleed, CPR, and first aid. If you are looking for a way to assist your friends, neighbors, and fellow residents in a unique and important way, please consider signing up for the Litchfield Community Emergency Response Team!

NORTHFIELD FIRE DEPARTMENT FUNDRAISER

NORTHFIELD VOLUNTEER FIRE COMPANY



5TH ANNUAL GOLF TOURNAMENT



Crestbrook Golf Course

834 Northfield Rd., Watertown, CT

FRIDAY, SEPT. 26TH, 2025



4-PERSON SCRAMBLE

\$150/GOLFER

\$160/GOLFER
WITH CREDIT CARD

- | | |
|-----------------------------|-------------------------|
| ✓ 18 holes of golf | ✓ 10:00 Check-in |
| ✓ Players bag & range balls | ✓ 11:00 Putting contest |
| ✓ BBQ lunch & buffet dinner | ✓ 12:00 Shotgun start |

Click [here](#) for the Registration Form

LITCHFIELD'S AMERICA 250

*History That Inspires,
A Future We Create*

1776-2026

www.A250Litchfield.org



AMERICA 250
AFFILIATE



AMERICA'S



LITCHFIELD, CT

Have you had a chance to check out
the Litchfield's America 250 website?

<https://www.a250litchfield.org/>

You'll find details on upcoming events,
ways to get involved, and how to
support the celebration!

NEWS FROM THE WASTE REDUCTION COMMITTEE



What Do I Do with...?

What about items that don't belong in your blue recycling bin? Rather than throw them in the trash, did you know you can bring your electronics, mattresses, textiles, food scraps and more to the [Litchfield Recycling Center](#) for free recycling? Check out the list [here](#). Books (in good condition and appropriate material), and furniture and household items that are still useful and in good repair can be left at the Swap Shop to find a new home.

You can also use RecycleCT's [Recycle Wizard](#) to learn how to responsibly dispose of unwanted items, or search RecycleCT's alphabetical listing.

PaintCare coordinates free [paint recycling](#) drop-off sites around Connecticut, including hardware and paint stores (ACE). (But unwanted, leftover hazardous products must be properly disposed of at a Household Hazardous Waste collection center or collection event.)

[Terracycle's](#) mission is to eliminate the idea of waste by moving towards a circular economy with products made from recycled content and redesigned to be reusable. Terracycle collects and recycles trash that municipal recycling services currently can't accept—such as toys, mascara wands, and much more—and offers easy ways to keep packaging out of landfills and incinerators with many free recycling programs. These include ARM & HAMMER™ and OxiClean™, Bausch + Lomb, Brita®, Burt's Bees, Gillette®, SodaStream®, and Swiffer® and numerous others. To participate, simply find your brand on the Terracycle website, download a free shipping label, and mail your product empties to TerraCycle to recycle.

Click [here](#) for more Waste Reduction Committee News