



# **PP073-0018**

## **Traffic Operational Improvements along Route 63, Route 202, and Route 118**

---

Town of Litchfield  
Public Information Meeting  
Tuesday March 31, 2026 – 7:00PM

# Public Information Meeting

Tuesday March 31, 2026 – 7:00PM

## Proposed Project 073-0018 (PP073-0018) Traffic Operational Improvements along Route 63, Route 202, and Route 118

### Meeting Agenda

- Introduce project team – 5 min
- Presentation of Proposed Project – 20-30 min
  - Existing Conditions
  - Purpose of Project
  - Alternative Development
- Public Questions & Comments – Remainder



# Project Development Unit

---



Michael N.  
Calabrese, P.E.  
Highway Design  
Division Chief



Marissa L.  
Pfaffinger, P.E.  
Principal  
Engineer



Andrew J.  
Correia, P.E.  
Project  
Manager



Kevin R.  
McKernan, P.E.  
Project Engineer



# Project Development Process

## CONCEPT DEVELOPMENT

- Gather Background Data
- Develop concepts and alternatives
- Determine level of support
- Initiate project

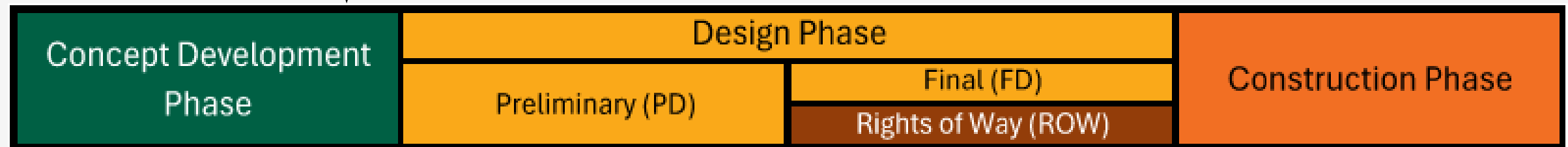
## DESIGN

- *Preliminary Design*
- Section 106 Process
- Section 4f Determination
- *Rights of Way*
- *Final Design*
- Environmental Permits

## CONSTRUCTION

- Maintenance and Protection of Traffic
- Construction Activities

We are here



# Background

**LITCHFIELD**  
**ROAD SAFETY AUDIT**

The report cover features a large aerial photograph of a town street intersection. To the right of the main image are three smaller photographs: the top one shows a group of people in safety vests gathered around a utility pole; the middle one shows a person in a safety vest holding a stop sign at a crosswalk; the bottom one shows a street scene with cars and buildings.

**SEPTEMBER 2021**

## Recommendations for Town Consideration

### Short Term

Simple, often low cost.  
Able to be implemented on quick timeline.

### Medium Term

More complex than Short Term.  
Often require dedicated funding.  
Typically within existing ROW.

### Long Term

Require detailed study and engineering.  
More substantial funding needs.

**2023** – Town of Litchfield requests Project Development Unit (PDU) explore Long-Term improvements for area.

# Concurrent Work

- Crosswalk Removal – 2023-2024 Traffic Operations removed crosswalk at the sight of several pedestrian strikes
- Parking Removal – 2024 Traffic Operations removed parking from section of U.S. 202
- Intersection of Route 118 & 254 – Ongoing study in Traffic Operations
- Town-led Sidewalk Enrichment Plan – Phase 1 current, additional phases to come.



**STATE OF CONNECTICUT DEPARTMENT OF TRANSPORTATION**  
BUREAU OF ENGINEERING AND CONSTRUCTION  
DIVISION OF TRAFFIC ENGINEERING  
**SERVICE MEMORANDUM**

SERVICE MEMO NO. 103281

TO: Maintenance Director FROM: Division Chief of Traffic Engineering

DISTRICT: 4 TOWN: 073: LITCHFIELD JOB NUMBER: 073-000126

LOCATION: U.S. Route 202 (West Street) at Meadow Street INT. NO:

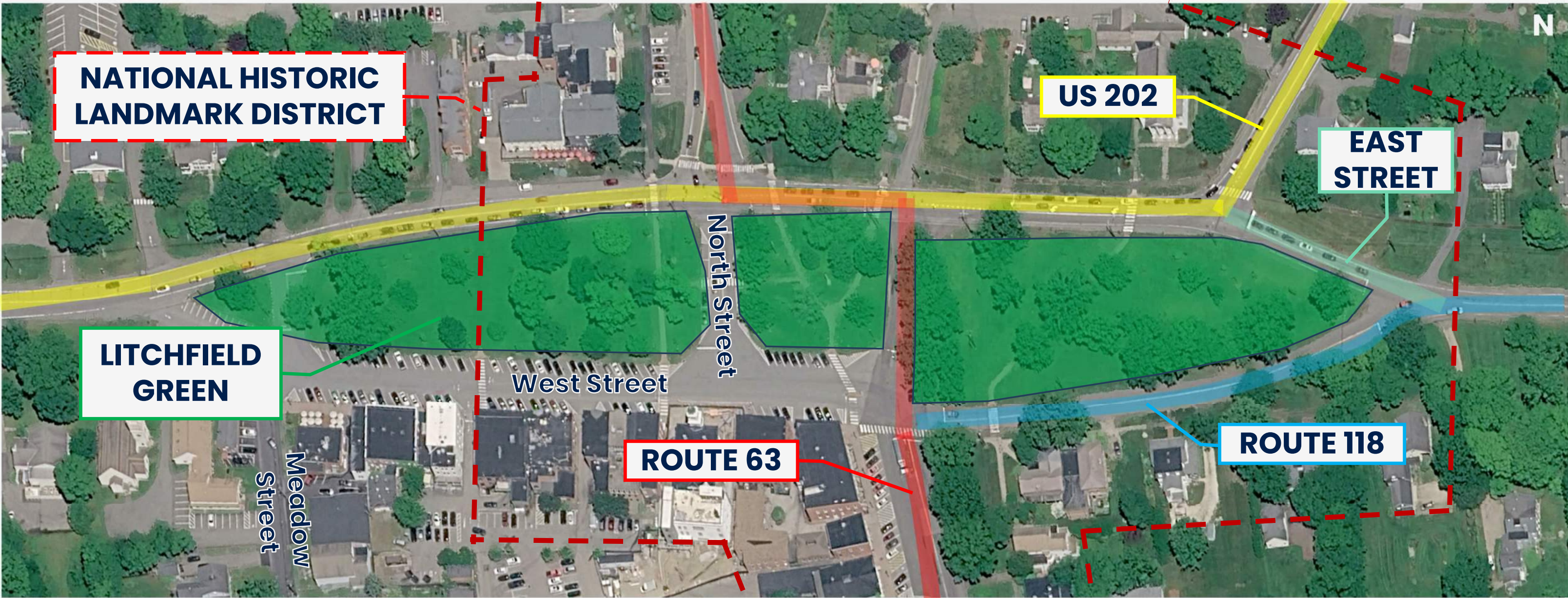
ROUTE NO: 202 CUM. MILEAGE: 38.39 ENGINEER: Angie Alegre

Date Issued: PLEASE REMOVE EXISTING "NO PARKING ANY TIME WITH ARROW", "VARIABLE" HOUR PARKING", "EXCEPT SUNDAYS" AND INSTALL "NO

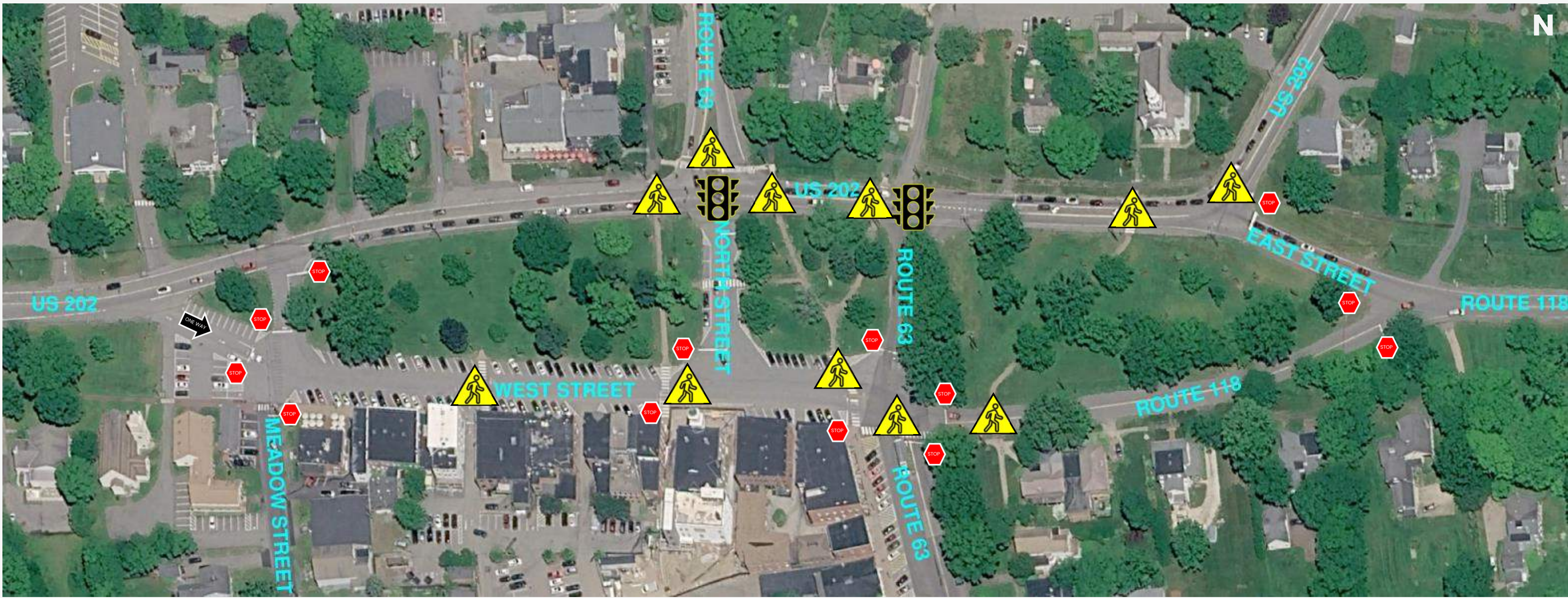




# Project Location

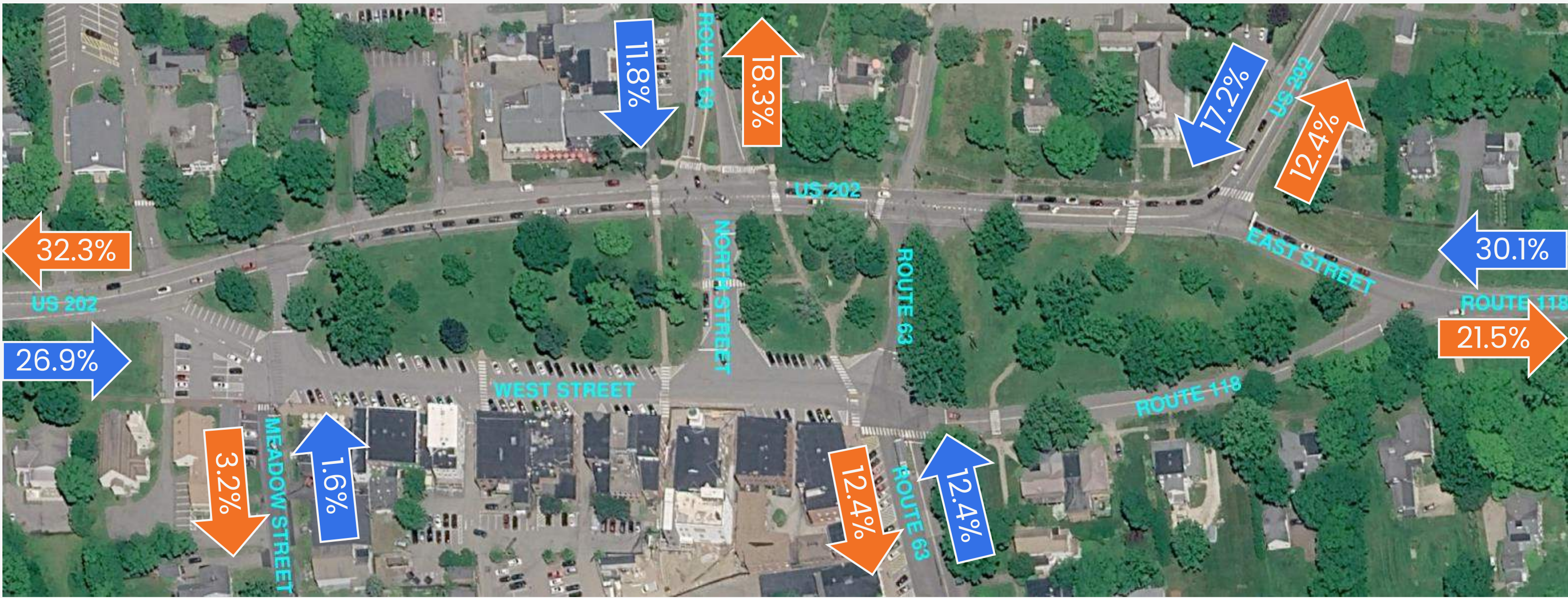


# Existing Conditions – Traffic Control



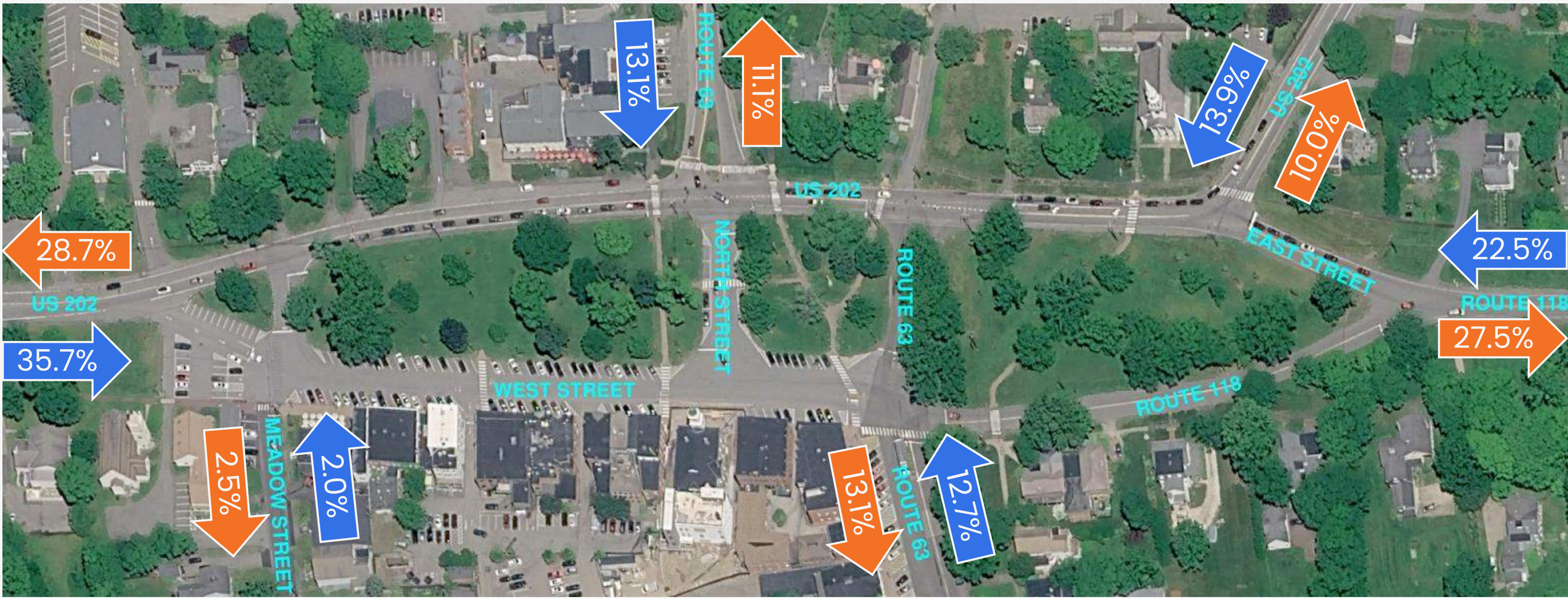
# Background – Traffic Patterns

A.M. Peak



# Background – Traffic Patterns

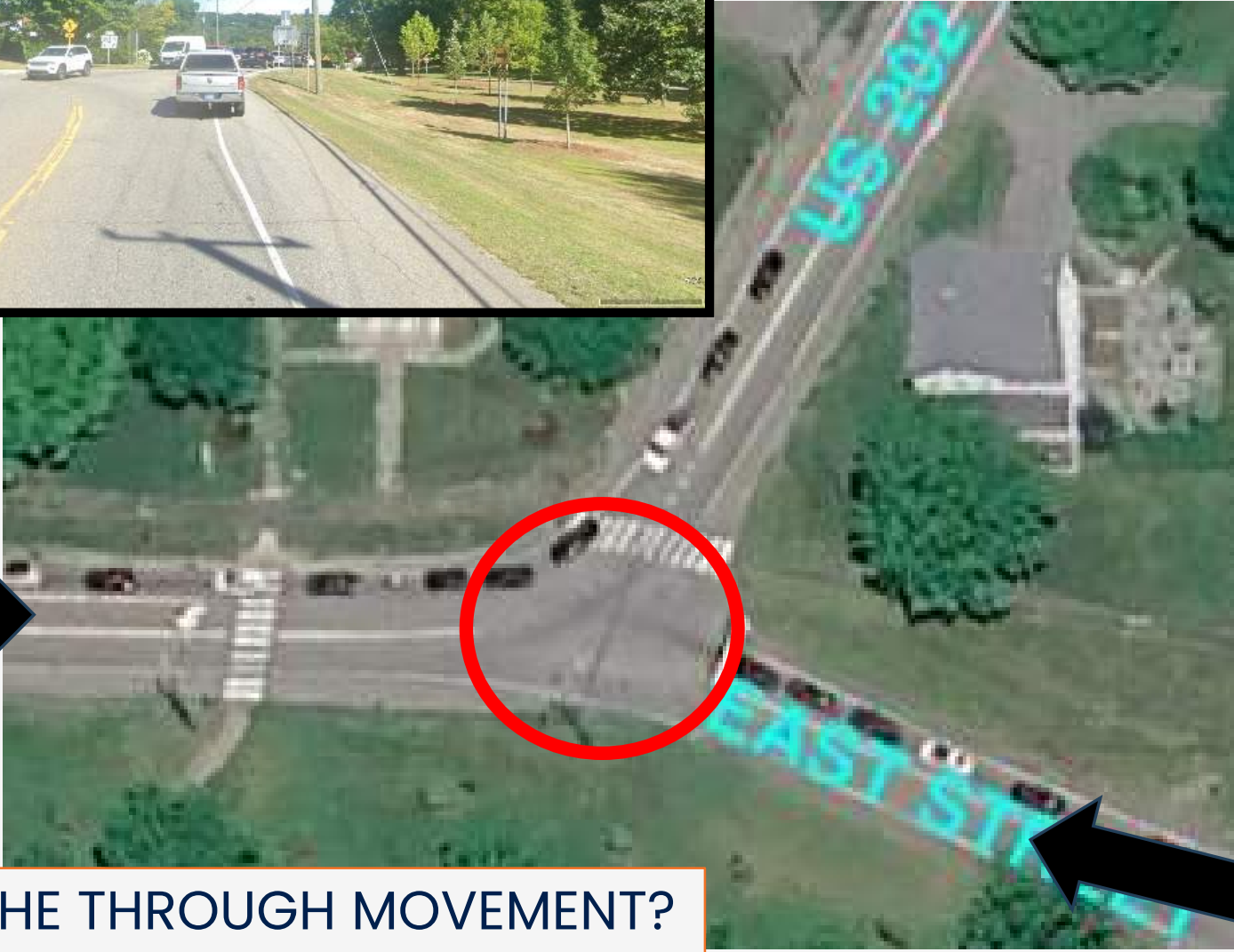
P.M. Peak



# Background – Priority Areas



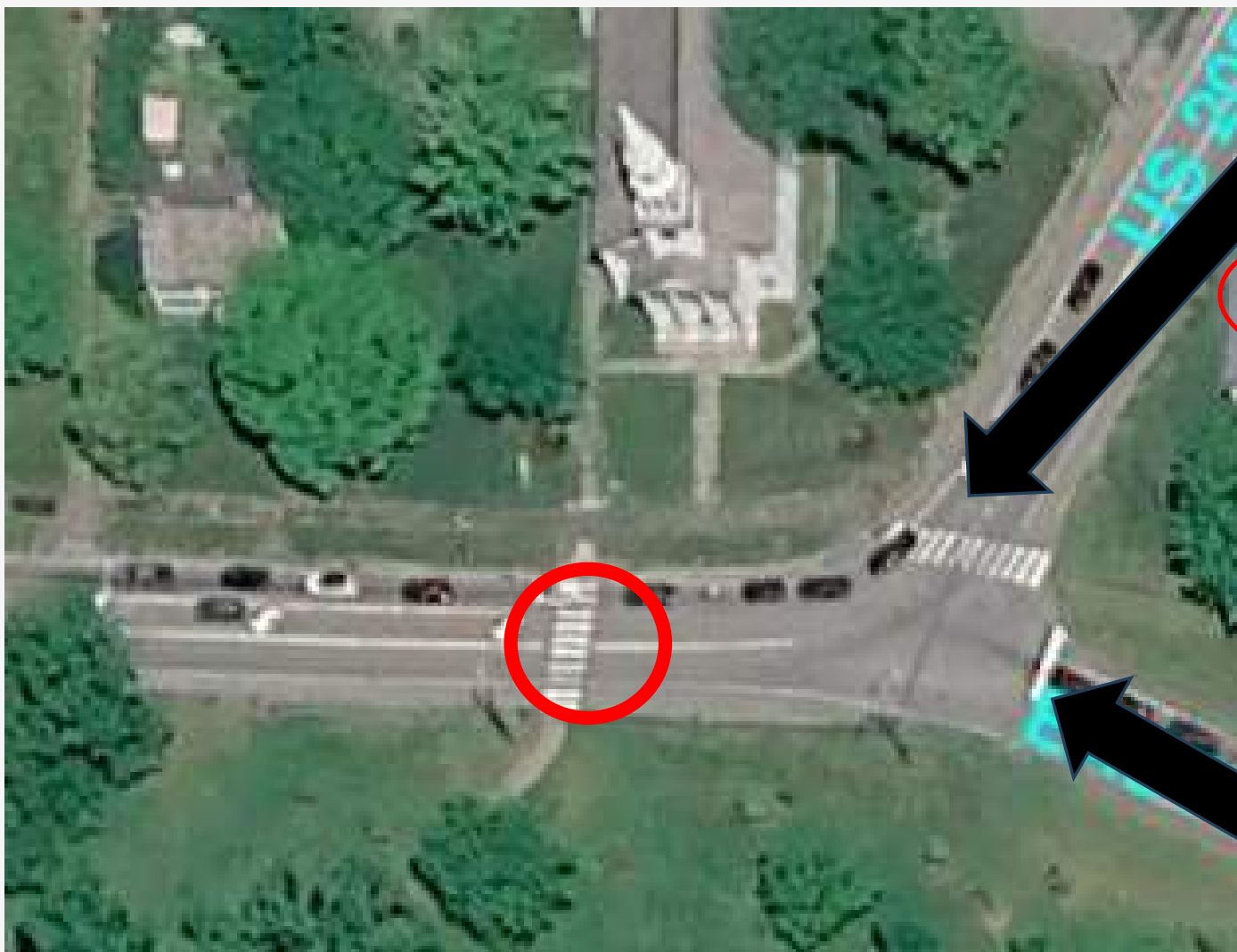
# Background – Priority Areas



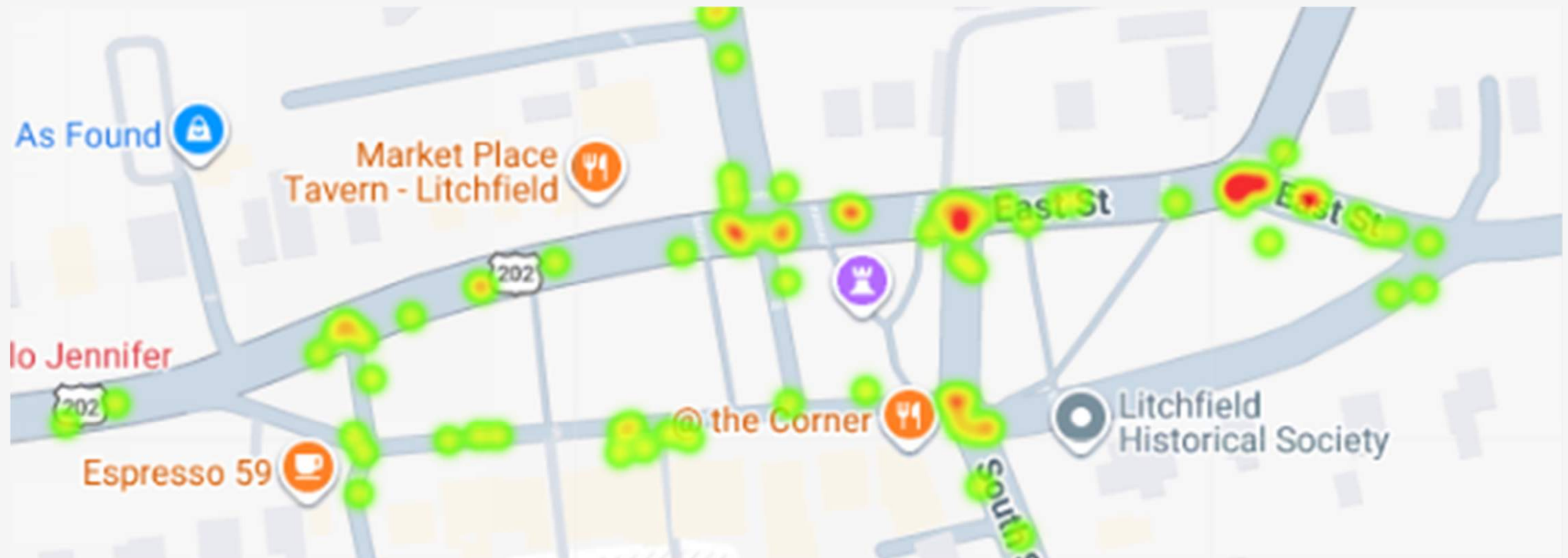
WHICH IS THE THROUGH MOVEMENT?

# Background – Priority Areas

WHERE ARE YOU LOOKING?



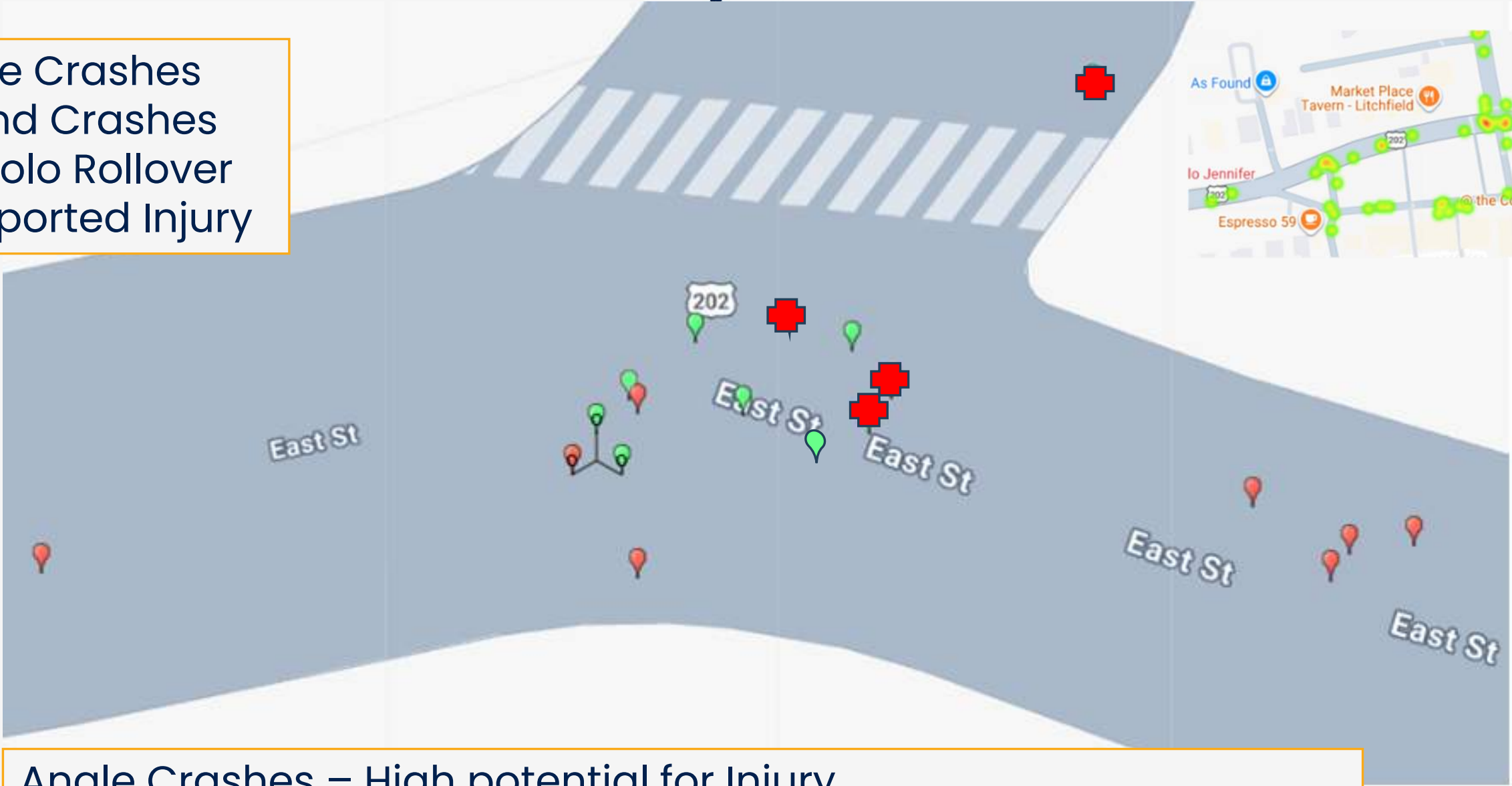
# Background – Crash Experience



95 Crashes over 3 Years (Jan 2023–Dec 2025)  
 34% Rear-End Collisions, 33% Angle Collisions, 10% Same Direction Sideswipe  
 13 Total Injury Collisions

# Background – Crash Experience

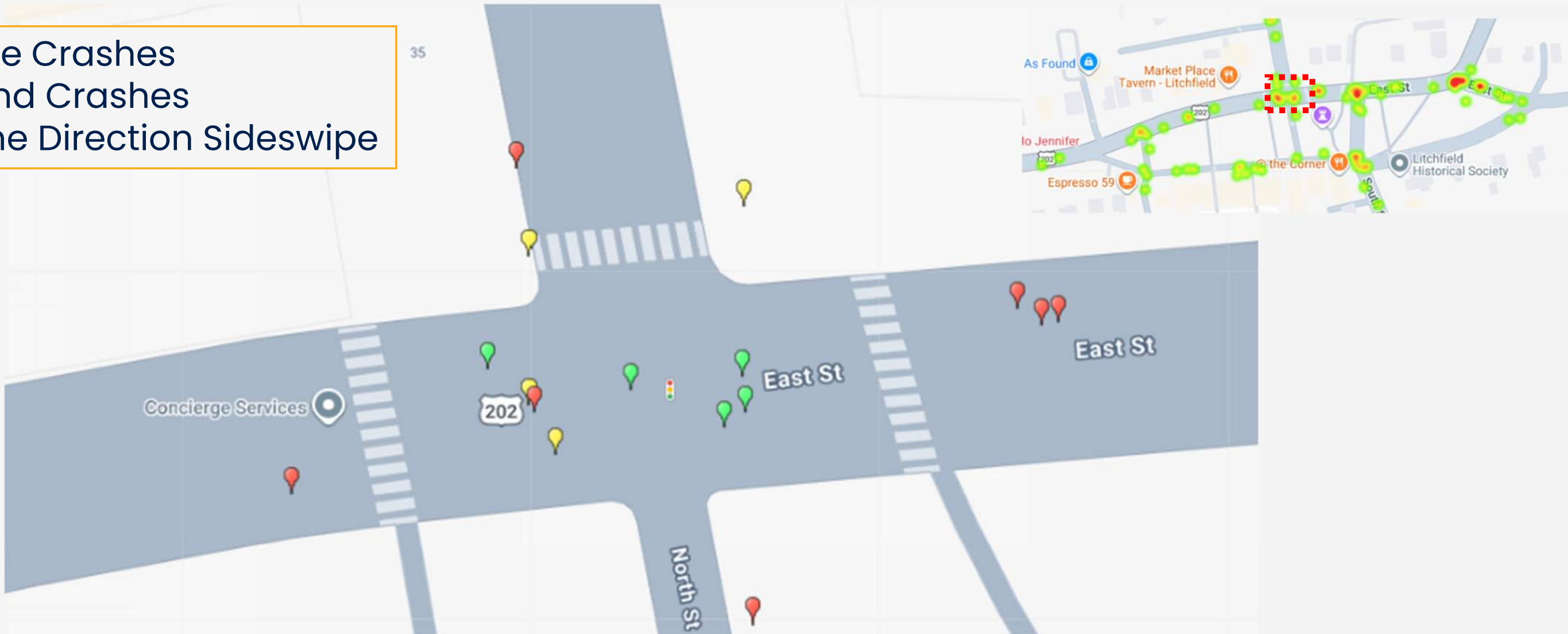
Green – Angle Crashes  
Red – Rear End Crashes  
Light Blue – Solo Rollover  
Crosses – Reported Injury



Angle Crashes – High potential for Injury  
7/10 Property damage only– lower speed, user confusion  
Rear Ends – Unexpected stops, users misinterpreting what actions other users will take

# Background – Crash Experience

Green – Angle Crashes  
Red – Rear End Crashes  
Yellow – Same Direction Sideswipe



Angle Crashes – Most potential for Injury  
5/5 without injury – lower speed, user confusion  
Same Direction Sideswipe – Users attempting to drive on shoulders, underestimating bypass space

# Background – Crash Experience



## Previous 5 Year Pedestrian Experience

3 Pedestrian Strikes at U.S. 202 at Meadow Street

- All from vehicles turning left from Meadow Street

1 Pedestrian struck by vehicle reversing from parking space on Route 63

Last Pedestrian Collision – 2023: Impetus for Crosswalk Removal

# Project Goals and Objectives

- **Reduce driver confusion**
- **Increase multimodal safety**
- **Improve continuity of roadway network – improve operations**
- **Retain historic character**

# Project Area Considerations

- GREEN – Existing roadway area
- ORANGE – Existing pavement or sidewalk buffer – within State ROW
- RED – Existing Town Green – considered the most sensitive resource



# Project Area Considerations

- Historic Context
- Type of Vehicular Traffic
  - Thru traveler/commuter
  - Local Traffic
  - Area Visitor
  - Seasonal Tourist
- Safety of All Users
- Walkability/Multimodal Use
- Roadway Confluence
- Destinations within Project Area
- Variability of Traffic Patterns

# Coordination

## Fall 2023

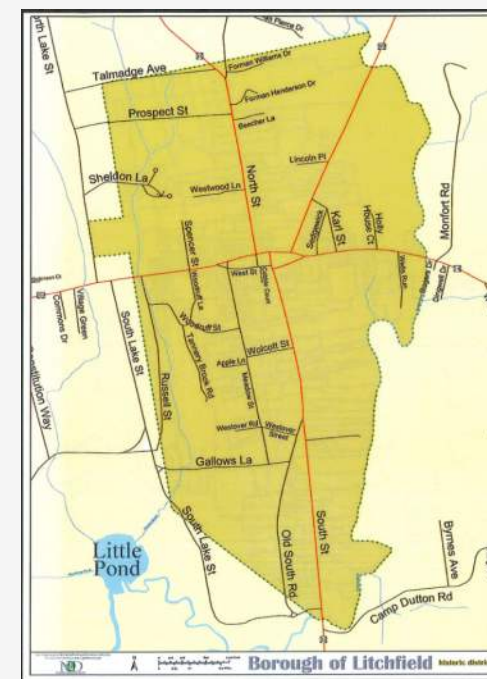
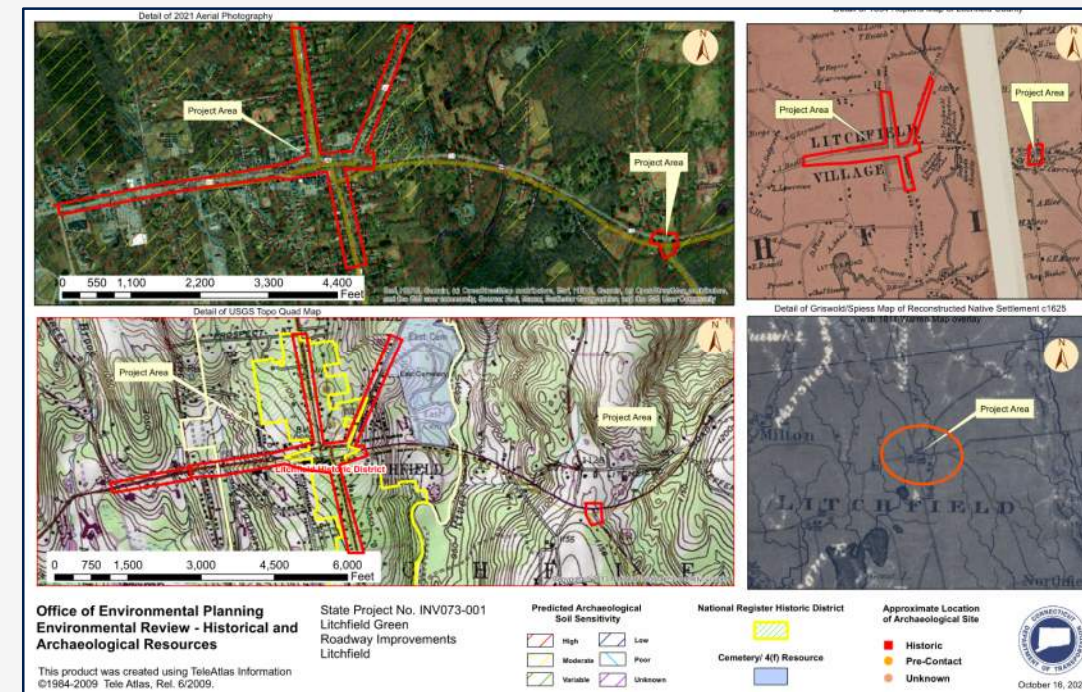
- PDU initiates early screening for natural & cultural resources
- Initial coordination with State Historic Preservation Office (SHPO)

## Spring 2025

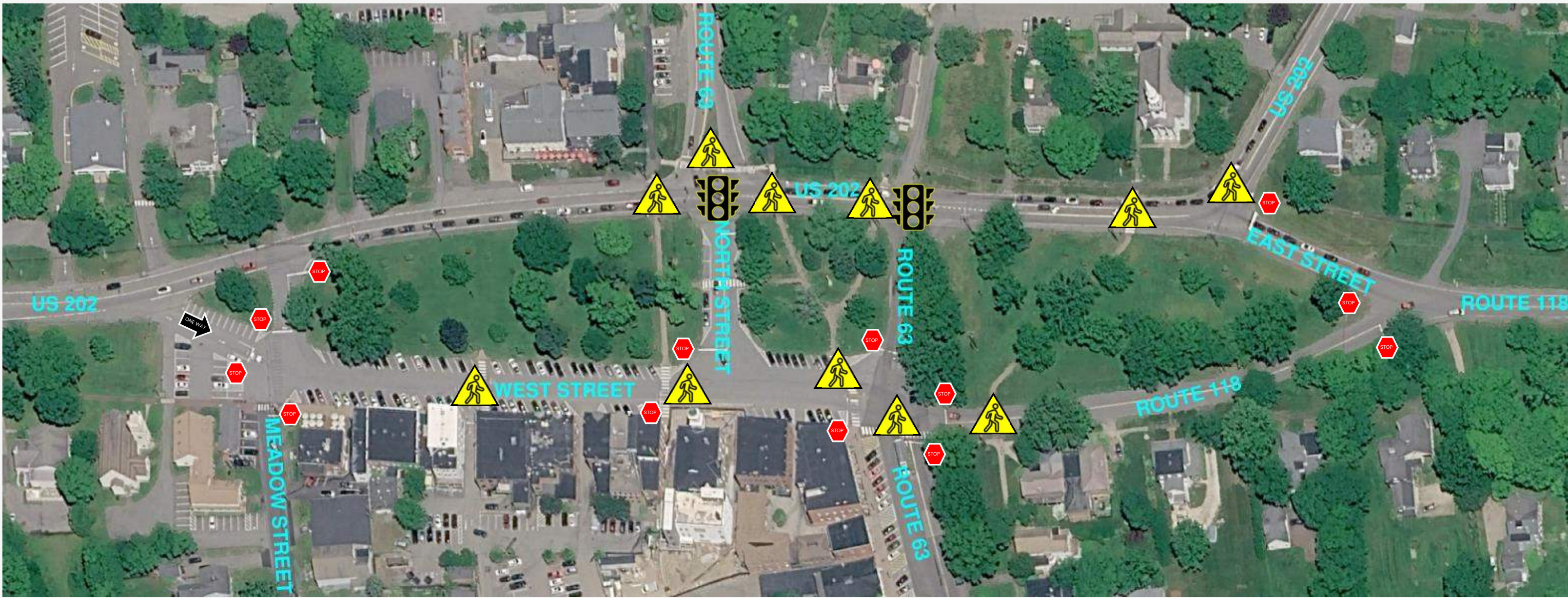
- PDU shares preliminary concept alternatives with CTDOT's Cultural Resource Unit and SHPO
- Meeting with Town of Litchfield to discuss preliminary alternatives and concepts
- Meeting with Borough of Litchfield to discuss preliminary alternatives and concepts

## Winter 2025

- Meeting with Town of Litchfield to show final concept recommendations
- SHPO review of recommended concept prior to public coordination and presentation



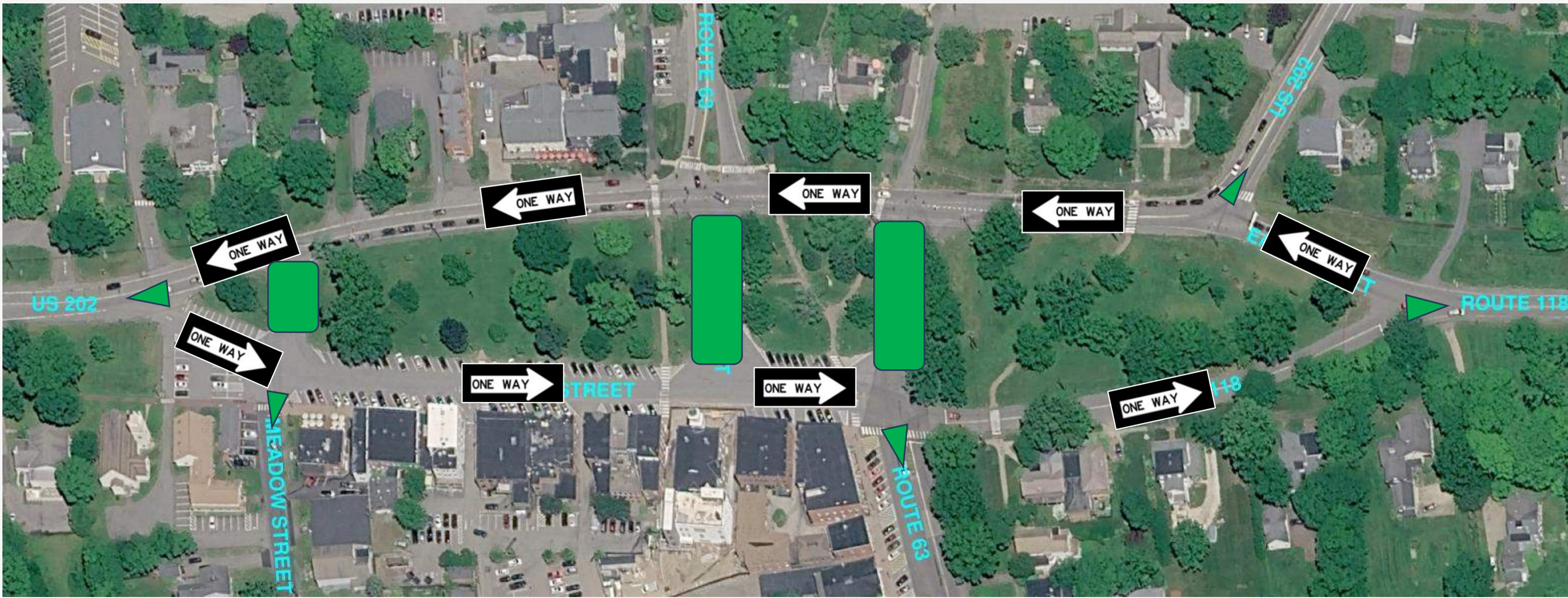
# Alternatives - Existing



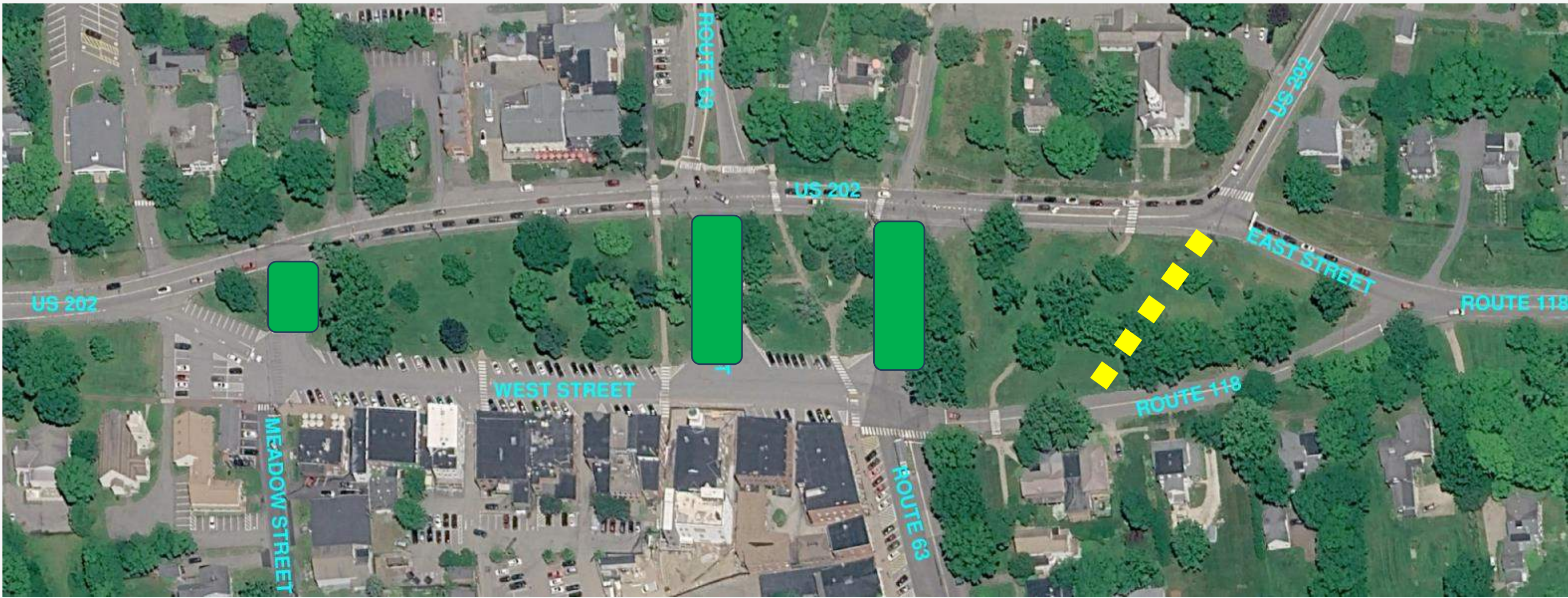
# Investigative Alternatives - Bypass



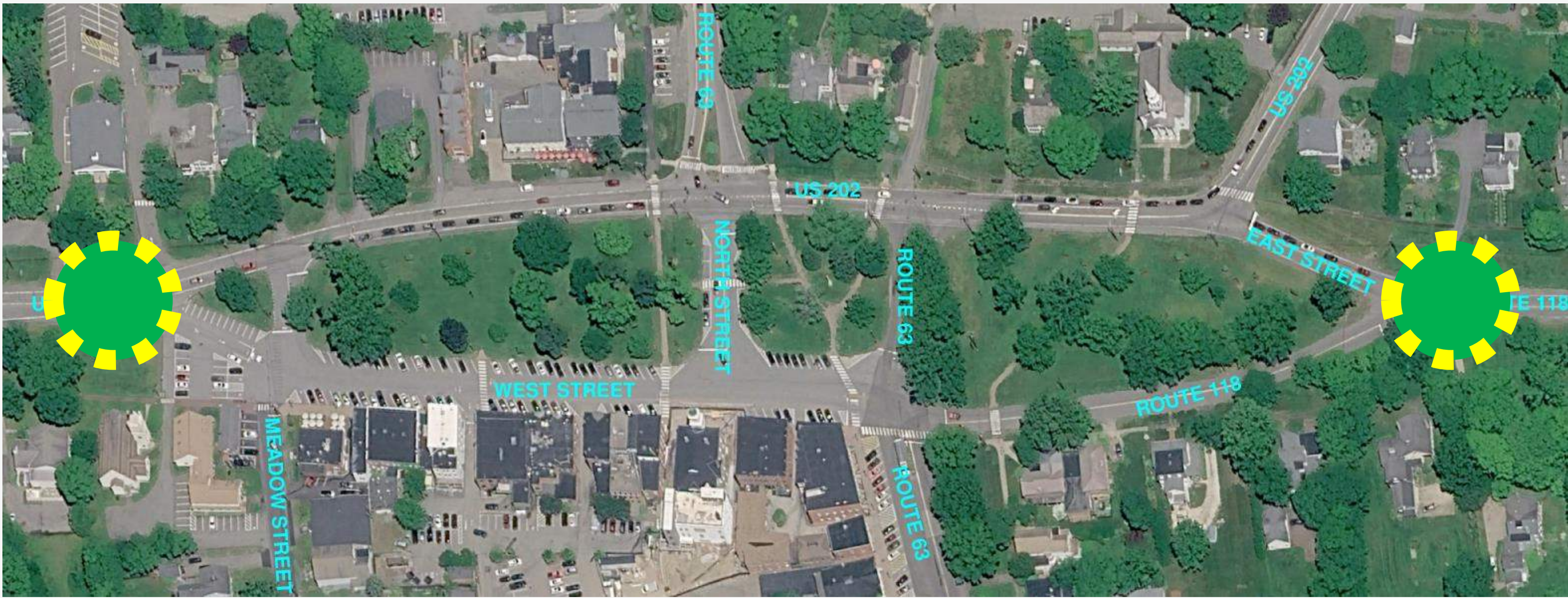
# Investigative Alternatives - Circulator



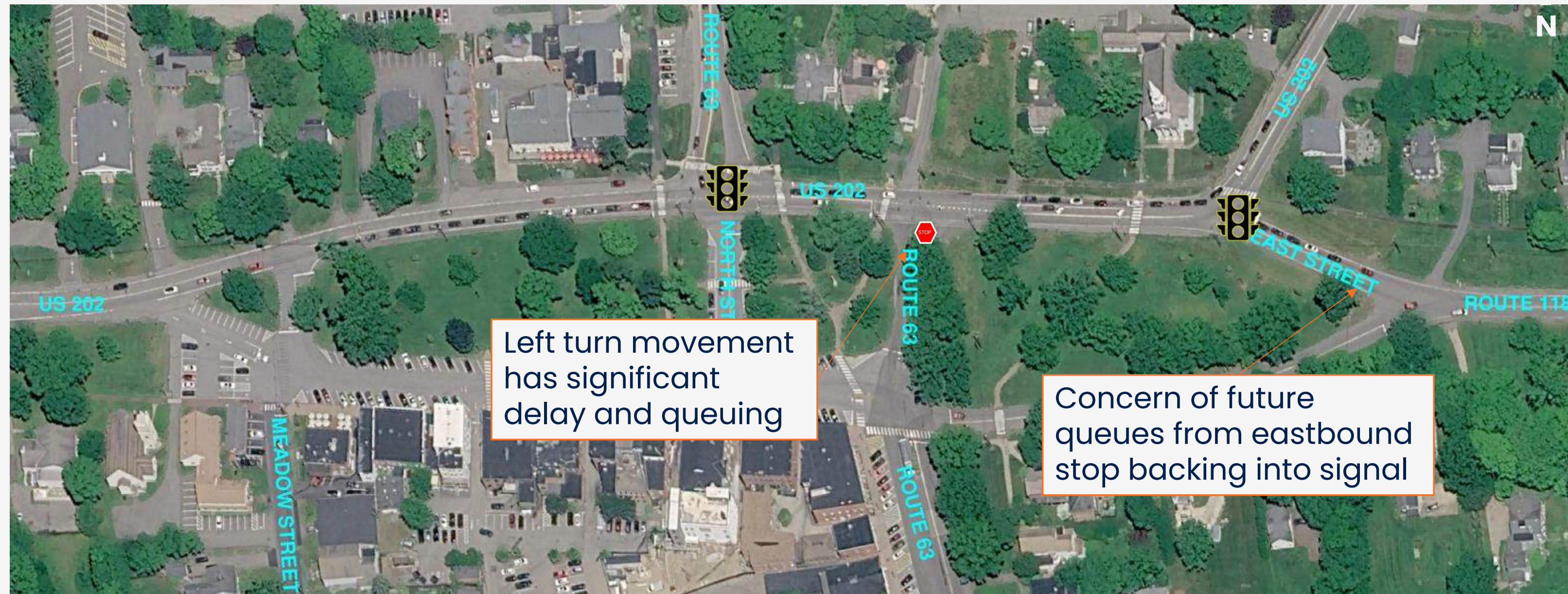
# Investigative Alternatives – New Cut-Through



# Investigative Alternatives – Roundabout Gateways



# Feasible Alternative Development – Relocate Traffic Signal



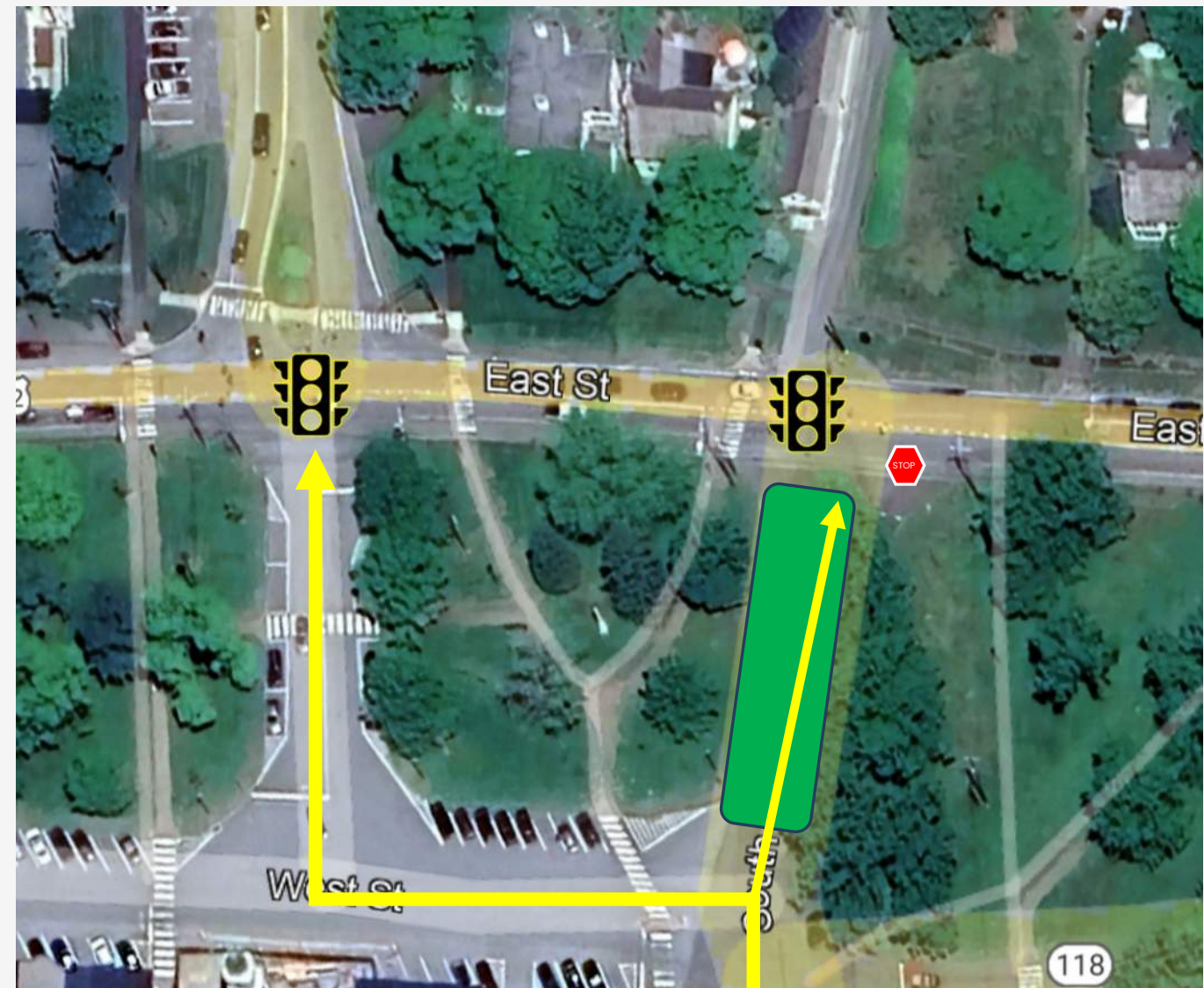
# Feasible Alternative Development – Route 118 Intersection

- Remove East Street Stop Sign
  - Realign 118 South of Green via pavement markings
    - Does not allow for large vehicles turning from East Street to 118 South of Green



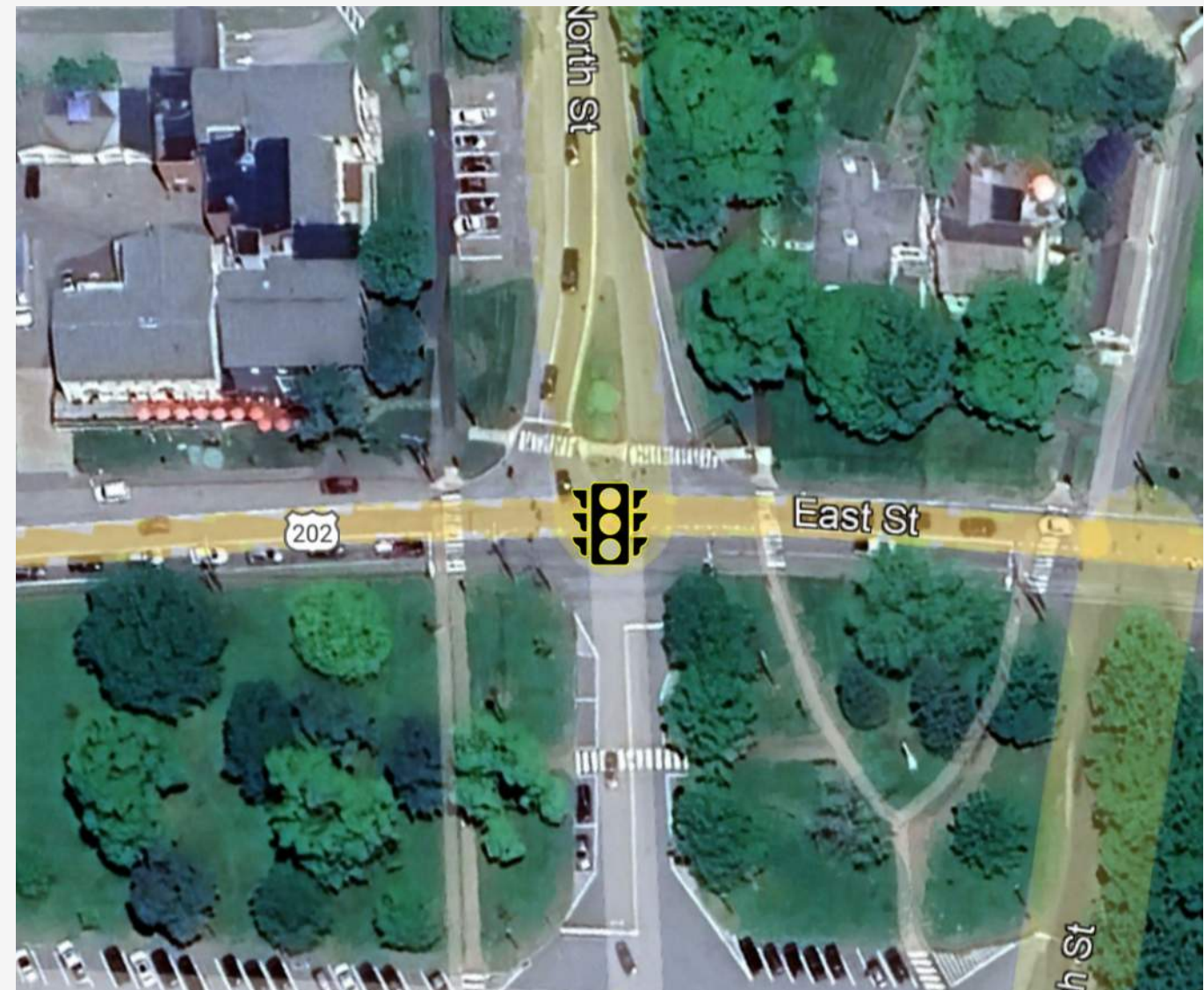
# Feasible Alternative Development - South Street Extension

- Don't Remove Signal
    - Creates 3 Closely Spaced Signals
    - Require 2 additional lanes over existing to store queues
  - Close South Street Extension
    - Impacts to Center Green for Truck Movements
- Route North and Westbound traffic through North Street Extension
    - Make South Street Extension Right-In/Right-Out at Route 202



# Feasible Alternative Development- North Street Intersection

- Alterations to Route 63 movements require increased capacity
- Sideswipe crash history suggests shoulder usage
- Low-Injury Angle Crashes suggest Low-Speed errors
  
- Remove Northern Island
  - Better alignment for southbound traffic
  - Space for Left Turn Lane
  
- Add Turn Lanes
  - Right-Turn lanes on East / West Approaches
  - Left Turn lanes on North/South Approaches

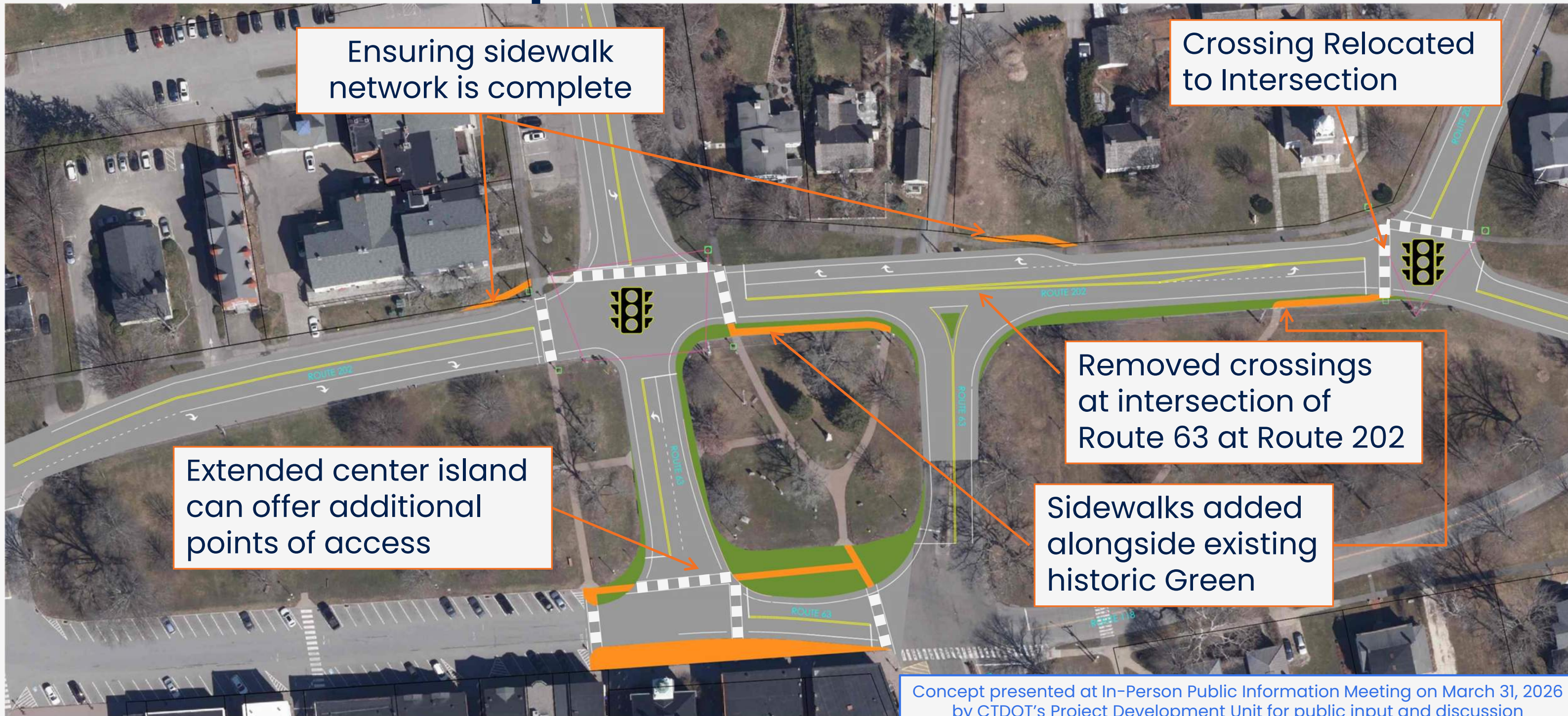


# Preferred Concept – Route 118



Concept presented at In-Person Public Information Meeting on March 31, 2026  
by CTDOT's Project Development Unit for public input and discussion

# Preferred Concept



Ensuring sidewalk network is complete

Crossing Relocated to Intersection

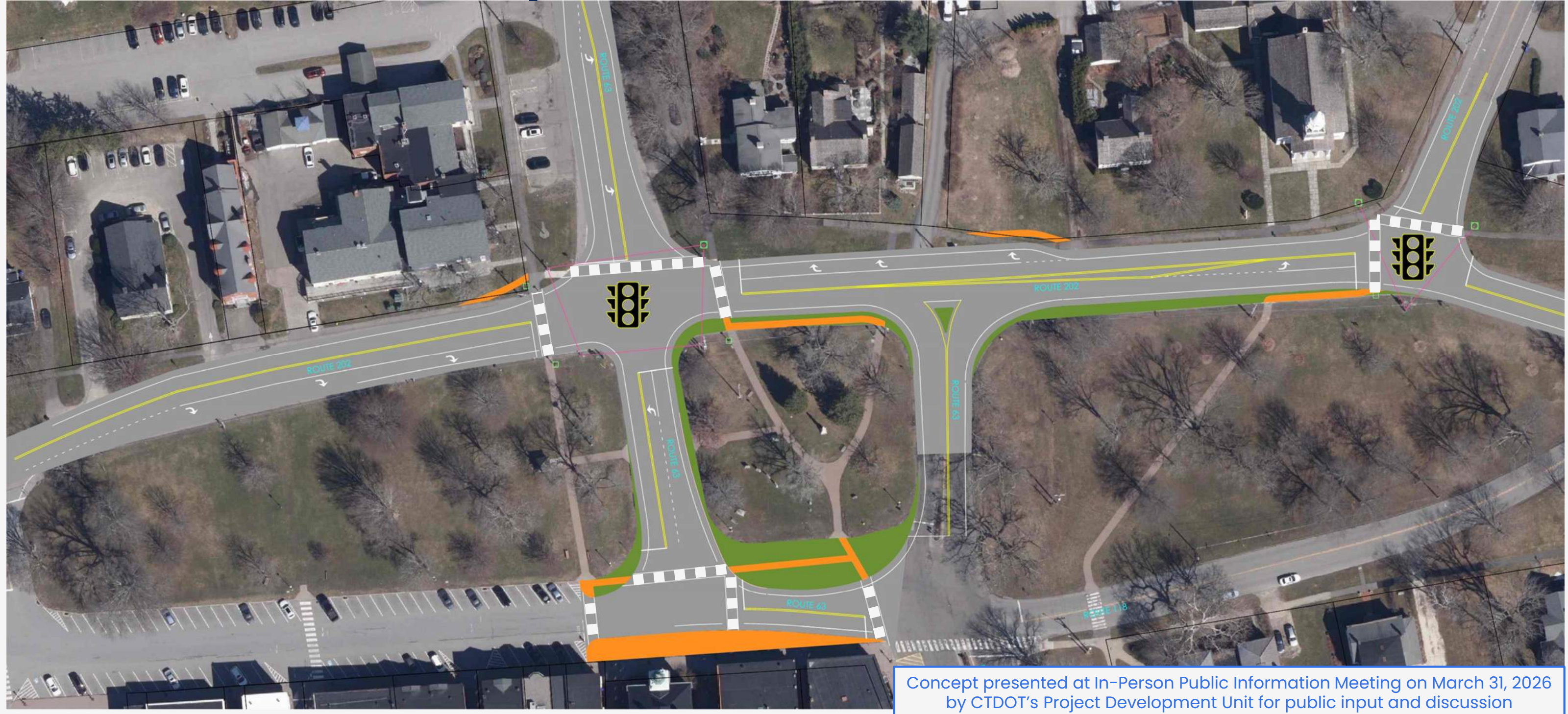
Removed crossings at intersection of Route 63 at Route 202

Extended center island can offer additional points of access

Sidewalks added alongside existing historic Green

Concept presented at In-Person Public Information Meeting on March 31, 2026 by CTDOT's Project Development Unit for public input and discussion

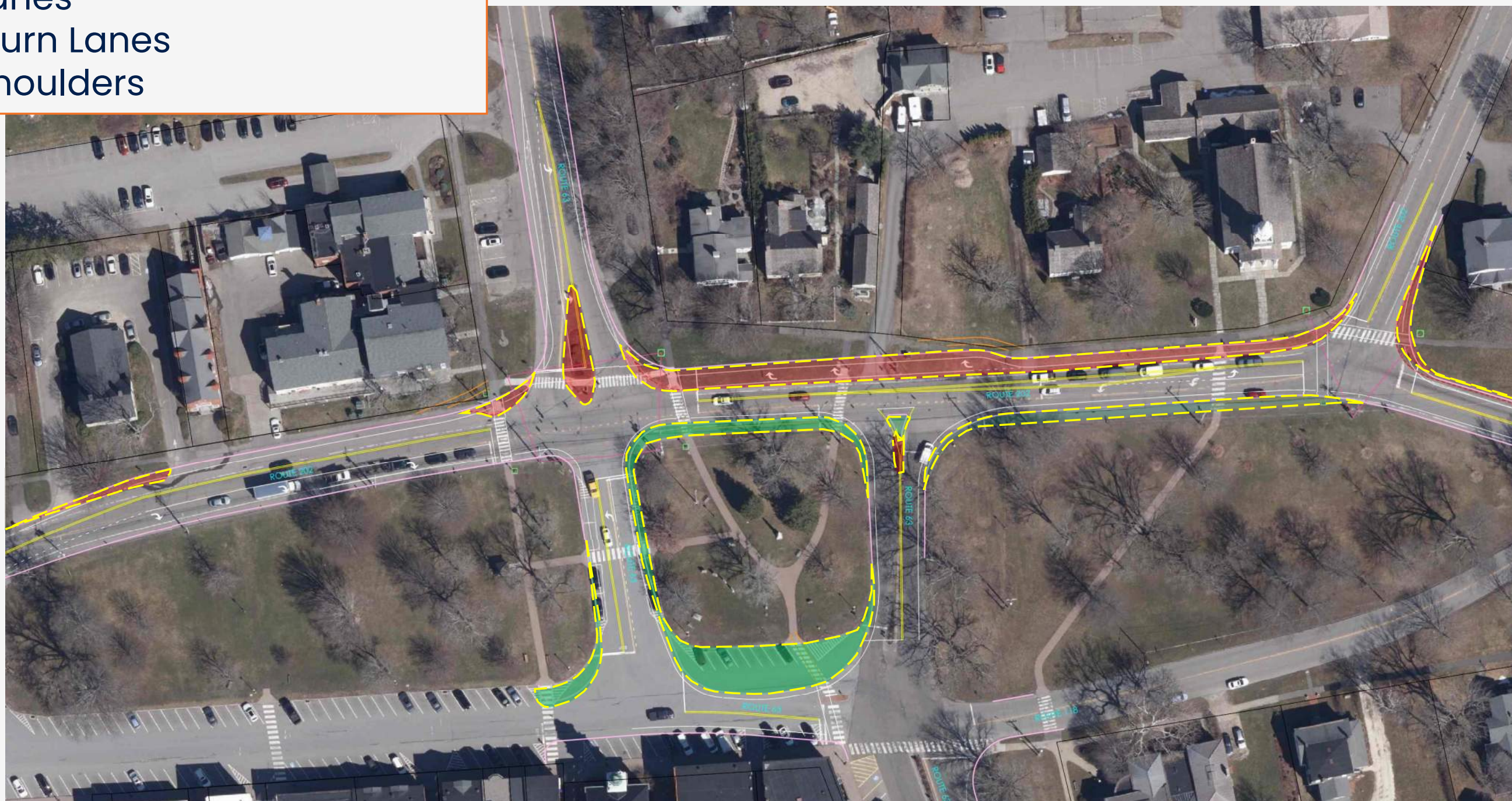
# Preferred Concept



Concept presented at In-Person Public Information Meeting on March 31, 2026 by CTDOT's Project Development Unit for public input and discussion

# Preferred Concept – Pavement Alterations

- 11 Foot Lanes
- 10 Foot Turn Lanes
- 5 Foot Shoulders



# Estimated Project Cost

**\$6,100,000**

Includes:  
Design Costs  
ROW Costs (if any)  
Construction Costs



Concepts presented at In-Person Public Information Meeting on March 31, 2026  
by CTDOT's Project Development Unit for public input and discussion



# Next Steps

- Collect Public Feedback(2 Weeks\*)
  - At this Meeting
  - Telephone
  - Email
  - Letter
- Consult with Town Leadership
- Consult with CTDOT Leadership
- Promote to Design, if Supported. Initiate Project.



Concepts presented at In-Person Public Information Meeting on March 31, 2026 by CTDOT's Project Development Unit for public input and discussion



# Project Development Process

## CONCEPT DEVELOPMENT

- Gather Background Data
- Develop concepts and alternatives
- Determine level of support
- Initiate project

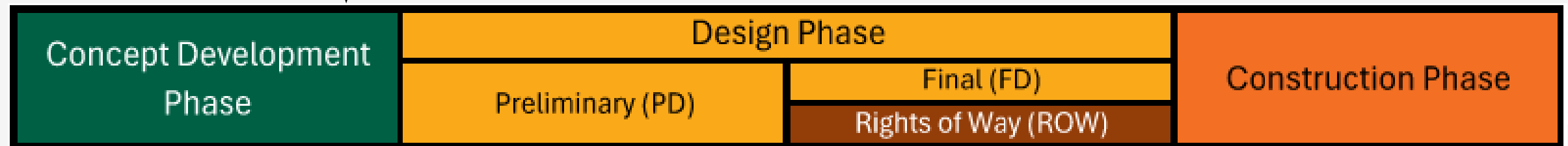
## DESIGN

- *Preliminary Design*
- Section 106 Process
- Section 4f Determination
- *Rights of Way*
- *Final Design*
- Environmental Permits

## CONSTRUCTION

- Maintenance and Protection of Traffic
- Construction Activities

We are here





**By Email:** DOTProjectPP073-0018@CT.GOV



**By Phone:** (860) 594-2020 – Please mention PP073-0018 in message



**Project Webpage:** <https://portal.ct.gov/DOTLitchfield0073-0018>

**Note:** Comment period is open through April 17, 2026

