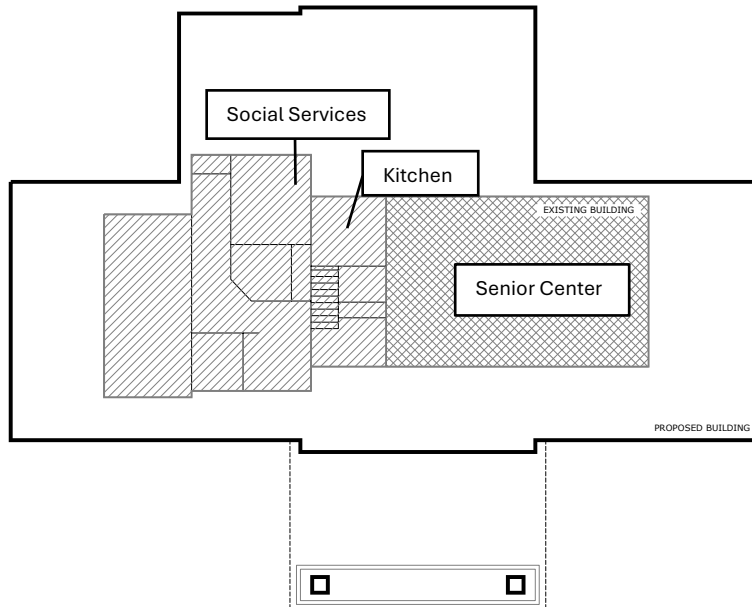


SIDE BY SIDE COMPARISON

EXISTING AND PROPOSED SENIOR CENTER



SHERMAN SENIOR COMMUNITY CENTER

SEPT. 22, 2025
NOT TO SCALE
SHERMAN, CT



FEATURE	EXISTING Not measured ~ square footage (SF)	PROPOSED BUILDING
Parking – Handicap	2 shared with SHS & SS	5 dedicated
Parking – Other	3 shared	29 dedicated
Parking – Overflow	0	60
Car lanes	1	2 lanes including 600 SF portico
Handicap Entrance	1	3
Patio for outdoor activity	0	2 patios
Welcome area	100 SF	360 SF
Meeting Rooms	1 of 725 SF	4 rooms totaling 1724 SF (925, 524, 224, 15)
Concurrent activities	1	3 or more
Kitchen	115 SF	305 SF
Office	80 SF open loft via narrow steep steps	252 SF (2 offices)
Restroom	2	3 restrooms, 2 with stalls
Storage - closet	1	3 (table/chairs, pantry, AV)
Storage - cabinets	2	6 room-length in each meeting room and office
Storage - Attic	0 full height via crawl space	360 SF full height, 4250 total SF via staircase