

THOMASTON

Public Schools

DISTRICT-WIDE STUDY

PRESENTATION FOLLOW-UP DISCUSSION | 7.9.2025

assessment and recommendations on the educational and operational efficiency of Thomaston Public Schools.

Presentation Follow-Up Questions

QUESTION #1 | Project Plan / Timeline

Can you please provide a detailed project plan, with a timeline, that includes key milestones for all stakeholders

QUESTION #2 | Workshops / Partnering

We recently completed our Plan of Conservation and Development (POCD). During that process we had support from the Naugatuck Valley Council of Governments (NVCOG). They designed a series of workshops to gather community feedback that were the best I have ever seen executed. Would you be open to either working with them to design something similar for this project and/or incorporating some of their techniques?

QUESTION #3 | Enrollment Projections

We believe that the single most important piece of data that is going to act as the central piece of this research is going to be the student population projections. Can you provide details about how you go about building the projections? How accurate have they been in past studies for other districts? Also, can you include a sensitivity analysis with your projection?

Presentation Follow-Up Questions

QUESTION #1 | Project Plan / Timeline

Can you please provide a detailed project plan, with a timeline, that includes key milestones for all stakeholders

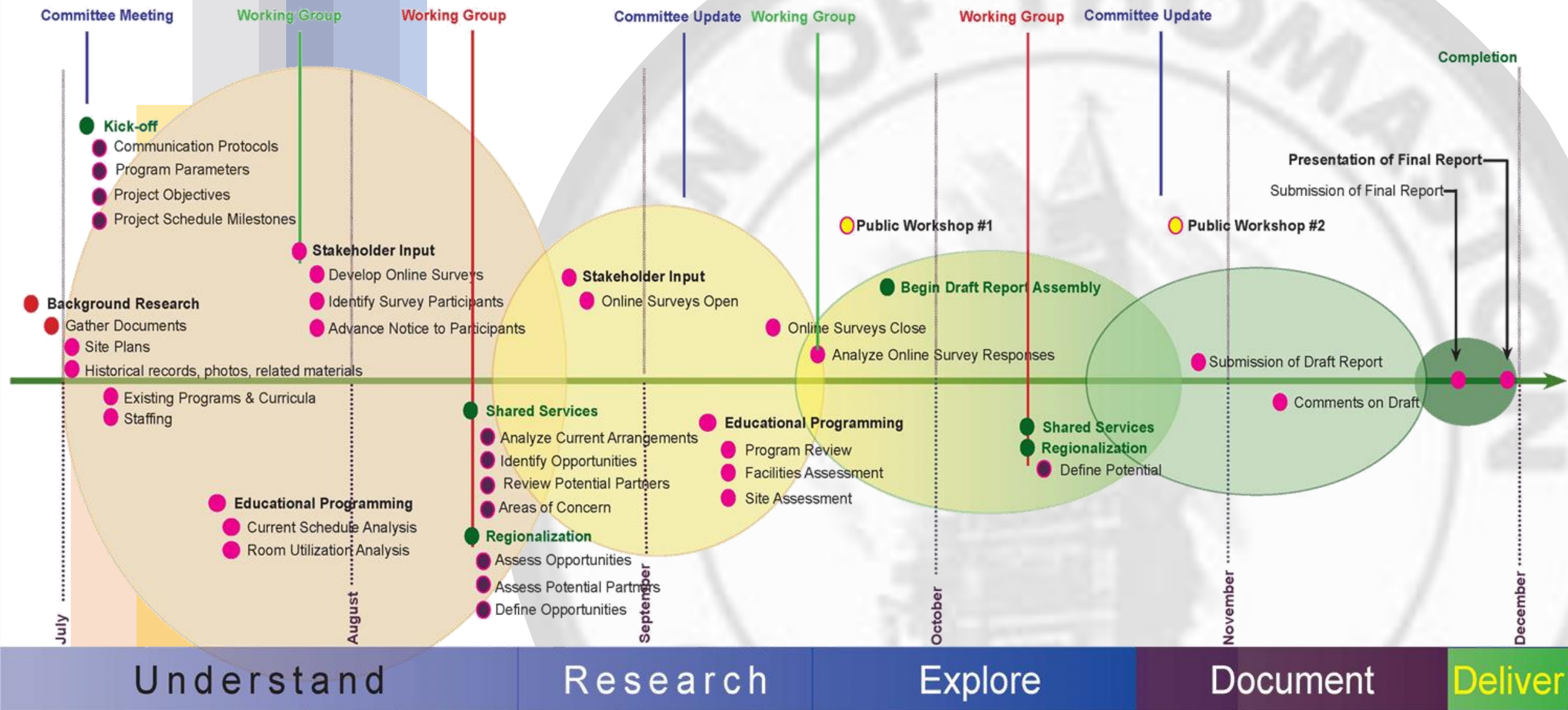
QUESTION #2 | Workshops / Partnering

We recently completed our Plan of Conservation and Development (POCD). During that process we had support from the Naugatuck Valley Council of Governments (NVCOG). They designed a series of workshops to gather community feedback that were the best I have ever seen executed. Would you be open to either working with them to design something similar for this project and/or incorporating some of their techniques?

QUESTION #3 | Enrollment Projections

We believe that the single most important piece of data that is going to act as the central piece of this research is going to be the student population projections. Can you provide details about how you go about building the projections? How accurate have they been in past studies for other districts? Also, can you include a sensitivity analysis with your projection?

Project Plan / Timeline | DRAFT July 2025



Presentation Follow-Up Questions

QUESTION #1 | Project Plan / Timeline

Can you please provide a detailed project plan, with a timeline, that includes key milestones for all stakeholders

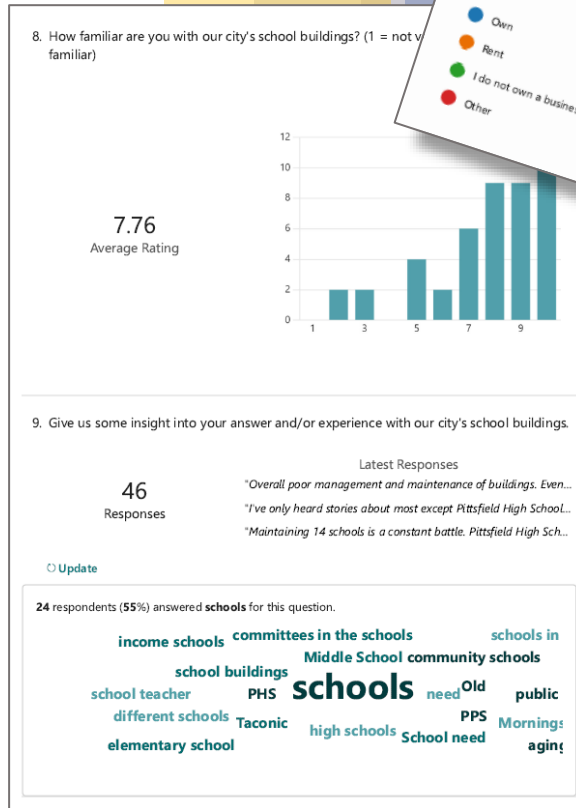
QUESTION #2 | Workshops / Partnering

We recently completed our Plan of Conservation and Development (POCD). During that process we had support from the Naugatuck Valley Council of Governments (NVCOG). They designed a series of workshops to gather community feedback that were the best I have ever seen executed. Would you be open to either working with them to design something similar for this project and/or incorporating some of their techniques?

QUESTION #3 | Enrollment Projections

We believe that the single most important piece of data that is going to act as the central piece of this research is going to be the student population projections. Can you provide details about how you go about building the projections? How accurate have they been in past studies for other districts? Also, can you include a sensitivity analysis with your projection?

Community Workshops / Partnering



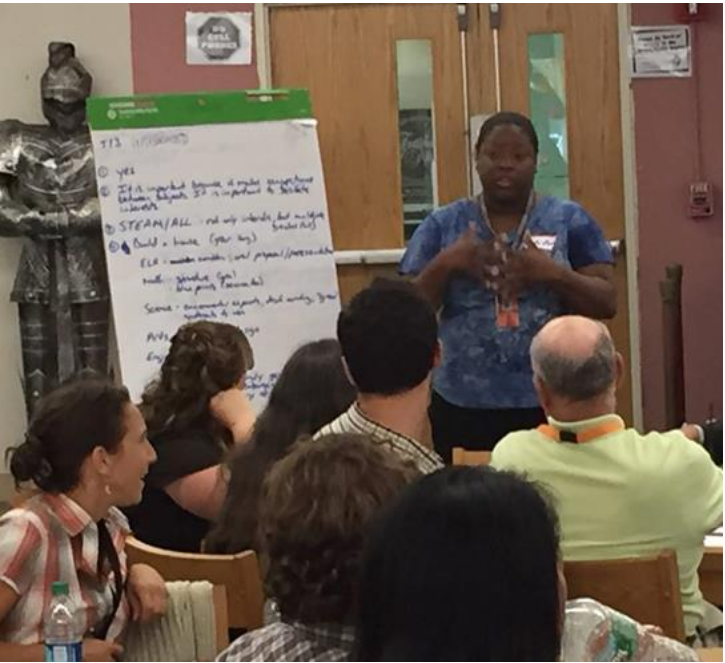
ON-LINE POLLING

This information can report out to Community Workshops real-time using PolLEV interface

SAMPLE AGENDA COMMUNITY WORKSHOP



Community Workshops / Partnering



Giving Voice / Engaging the Entire Community

Community Workshops / Partnering



Collective Expression / Community Decision-Making

Presentation Follow-Up Questions

QUESTION #1 | Project Plan / Timeline

Can you please provide a detailed project plan, with a timeline, that includes key milestones for all stakeholders

QUESTION #2 | Workshops / Partnering

We recently completed our Plan of Conservation and Development (POCD). During that process we had support from the Naugatuck Valley Council of Governments (NVCOG). They designed a series of workshops to gather community feedback that were the best I have ever seen executed. Would you be open to either working with them to design something similar for this project and/or incorporating some of their techniques?

QUESTION #3 | Enrollment Projections

We believe that the single most important piece of data that is going to act as the central piece of this research is going to be the student population projections. Can you provide details about how you go about building the projections? How accurate have they been in past studies for other districts? Also, can you include a sensitivity analysis with your projection?

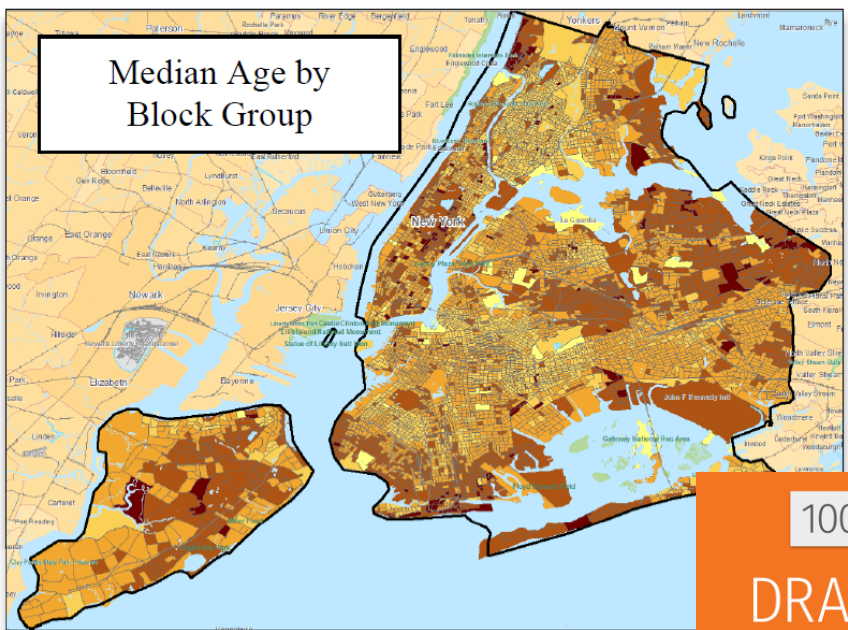
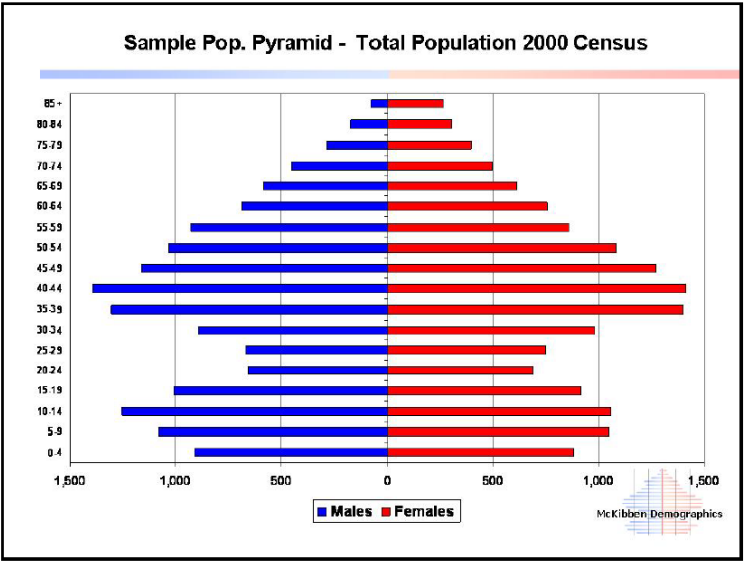
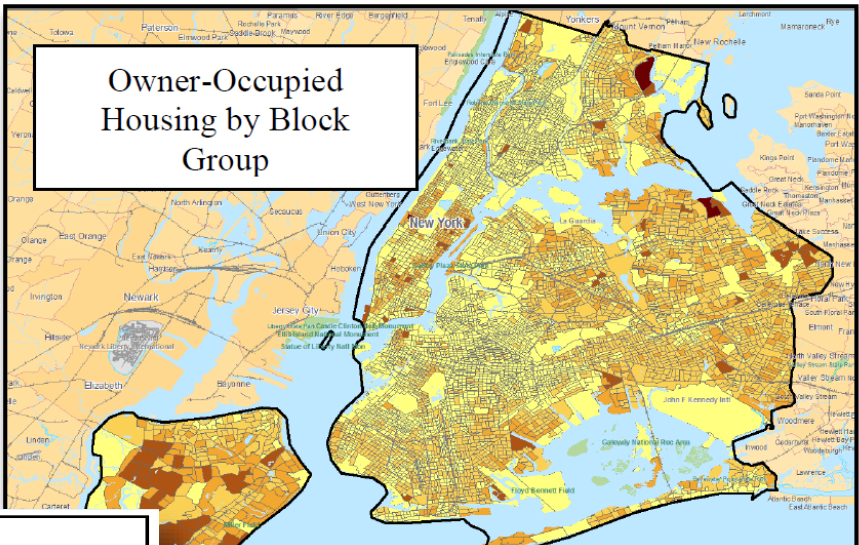
Enrollment Projections

Proposal for Demographic Services for
Thomaston Public Schools,
Connecticut

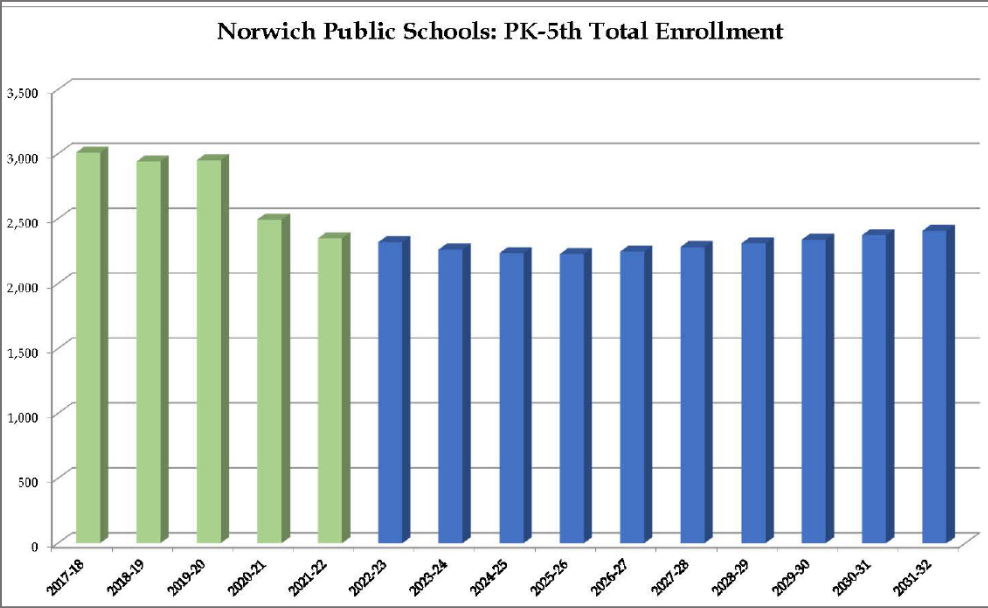
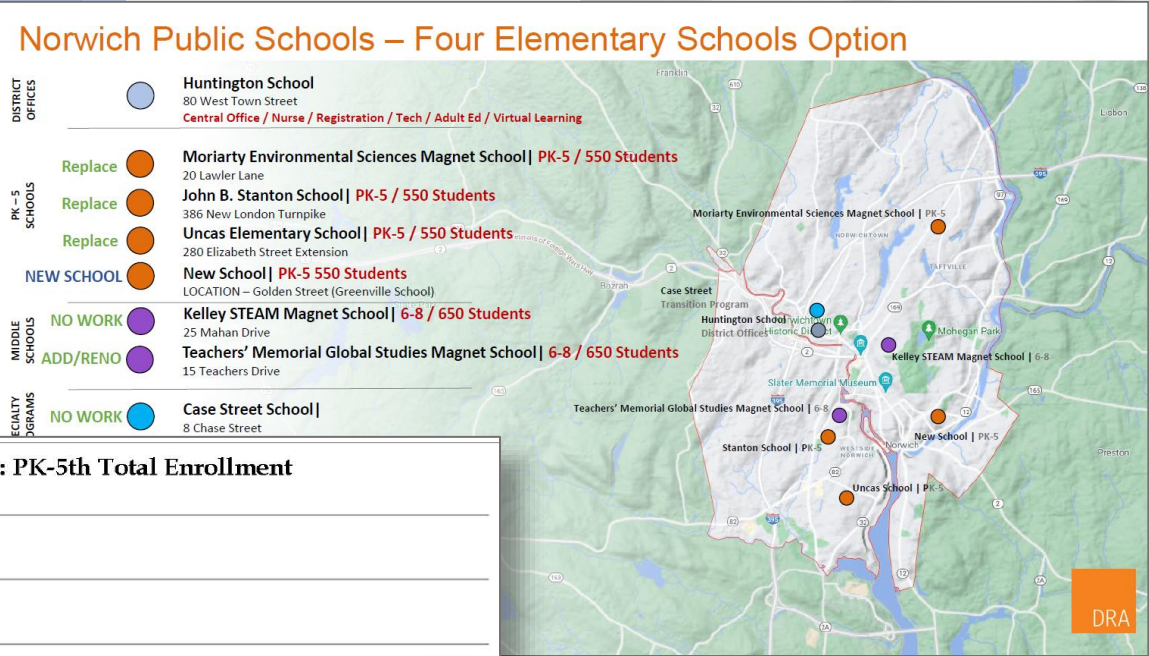
July 2025

CropperGIS

- Professional Service Fee
\$14,000
- Timeframe to Complete
10-12 weeks



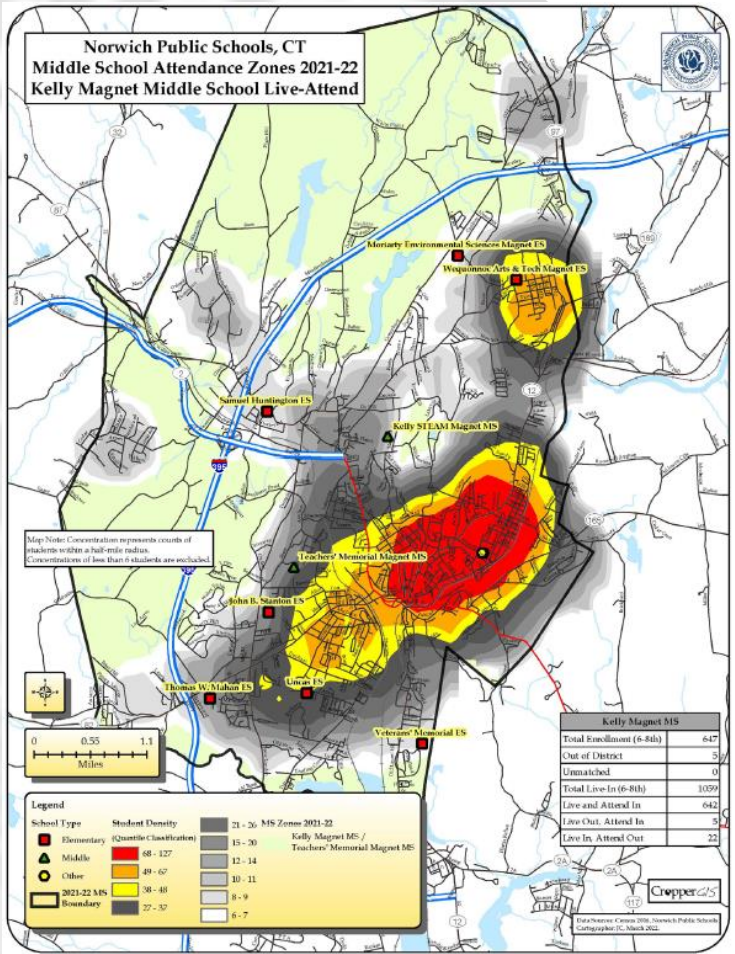
Enrollment Projections



20-YEAR ENROLLMENT FORECAST | GRADES PK - 5

DISTRICT RE-SHAPING

CropperGIS



STUDENT DENSITY | BY LOCATION WITHIN COMMUNITY

THOMASTON

Public Schools

DISTRICT-WIDE STUDY

PRESENTATION FOLLOW-UP DISCUSSION | 7.9.2025

assessment and recommendations on the educational and operational efficiency of Thomaston Public Schools.