



PUBLIC WORKS DEPARTMENT

TOWN OF WINCHESTER

189 Rowley Street

Winsted, CT 06098

Phone (860) 379-4101 Fax: (860) 738-3509

2022 Road and Infrastructure Improvement Bond

Road Segment Information Sheet

Grantville Rd Bridge

From	Danbury Quarter Rd	To	620 ft along Grantville
Improvement Scheduled	FY 2026		
2019 Paser Rating	Does not apply		
Estimated Cost/Town Share	\$1,200,000	\$240,000	

Description of Existing Conditions

Pavement – The surface is adequate.

Drainage
Surface flow – Water is flowing onto the bridge from the approaching roadway.

Shoulders –
Inlets – There are limited catch basins on this section. Some additional basins will be needed.

Pipes –

Sidewalks – There are no sidewalks present.

Deck – The deck is showing signs of efflorescence on the underside.

Superstructure – The fascia beams are showing significant spalling with some rebar exposed.

Bridge Railing – It is in poor condition. It is also sub-standard and needs to be replaced.

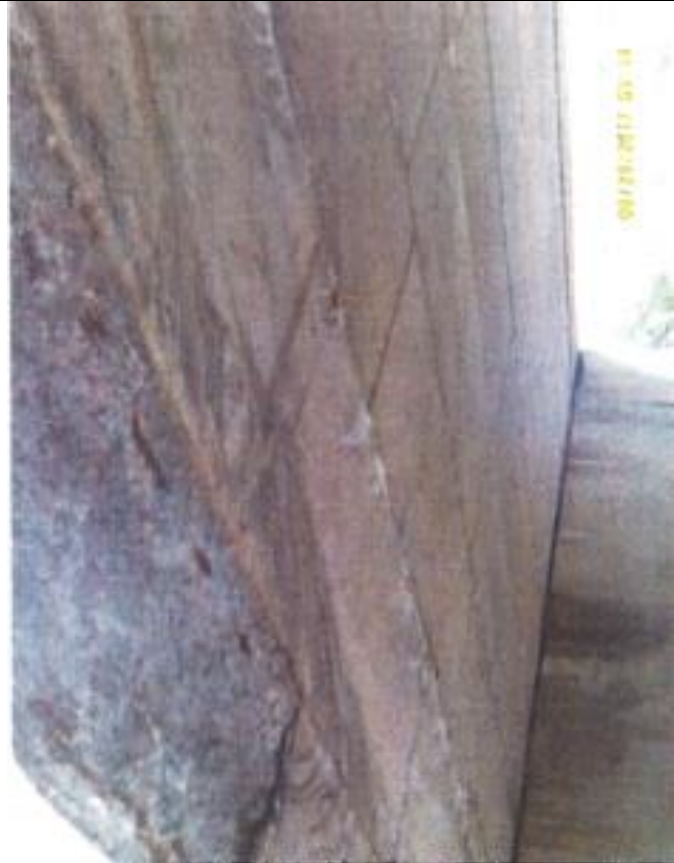
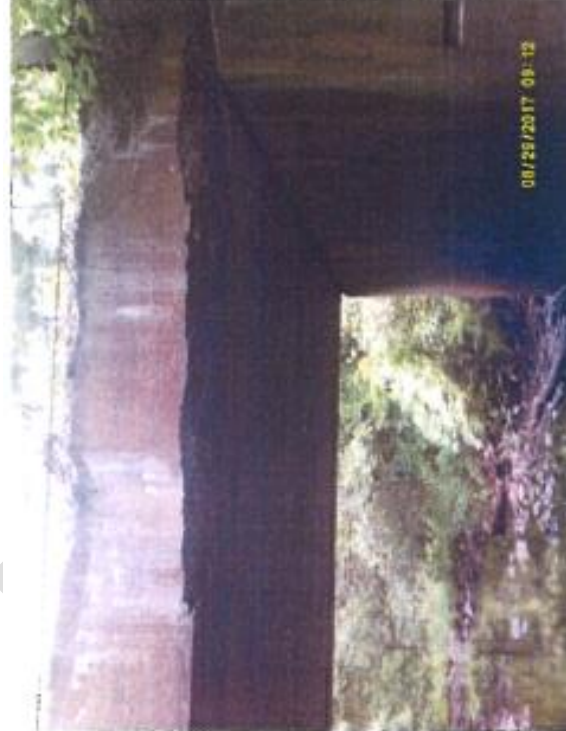





Photo 1. Bridge Deck and Fascia from underneath

<div>Buried Utilities</div> <div>Water – There are no water mains on this road.</div> <div>Sewer – There are no sewer mains are no sewer mains.</div> <div>Eversource Electric – The power lines are overhead.</div> <div>Eversource Gas has no mains in this area.</div> <div>Other – Communications appear to be overhead.</div> <div>Other Considerations –</div>	<div></div> <div>Photo 2. Looking at Upstream Facia</div>		
<div>Proposed Improvements</div> <table><tr><td><div>Description of Work</div><div>1. The Bridge Deck and support beams will be removed</div><div>2. The roadway approaching the bridge will be reconstructed to allow drainage to be installed to prevent water from flowing onto the deck.</div><div>3. The abutments and wing walls will have spot repairs performed to repair damage.</div><div>4. The bridge deck and support structure will be replaced in kind with new bridge rails.</div><div>Status of Design – Design has yet to begin. Design must start 2 yrs ahead of work.</div><div>Budget for Improvements</div><div>Preliminary Cost Project Est - \$1,200,000</div><div>State Participation: \$960,000.</div><div>Total Town Share Estimate - \$240,000</div></td><td><div></div></td></tr></table>		<div>Description of Work</div> <div>1. The Bridge Deck and support beams will be removed</div> <div>2. The roadway approaching the bridge will be reconstructed to allow drainage to be installed to prevent water from flowing onto the deck.</div> <div>3. The abutments and wing walls will have spot repairs performed to repair damage.</div> <div>4. The bridge deck and support structure will be replaced in kind with new bridge rails.</div> <div>Status of Design – Design has yet to begin. Design must start 2 yrs ahead of work.</div> <div>Budget for Improvements</div> <div>Preliminary Cost Project Est - \$1,200,000</div> <div>State Participation: \$960,000.</div> <div>Total Town Share Estimate - \$240,000</div>	<div></div>
<div>Description of Work</div> <div>1. The Bridge Deck and support beams will be removed</div> <div>2. The roadway approaching the bridge will be reconstructed to allow drainage to be installed to prevent water from flowing onto the deck.</div> <div>3. The abutments and wing walls will have spot repairs performed to repair damage.</div> <div>4. The bridge deck and support structure will be replaced in kind with new bridge rails.</div> <div>Status of Design – Design has yet to begin. Design must start 2 yrs ahead of work.</div> <div>Budget for Improvements</div> <div>Preliminary Cost Project Est - \$1,200,000</div> <div>State Participation: \$960,000.</div> <div>Total Town Share Estimate - \$240,000</div>	<div></div>		